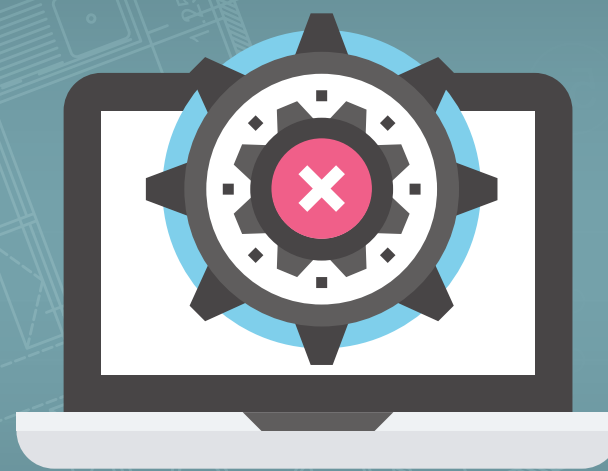


8 Ways To Get More Productive with **DraftSight® Professional**



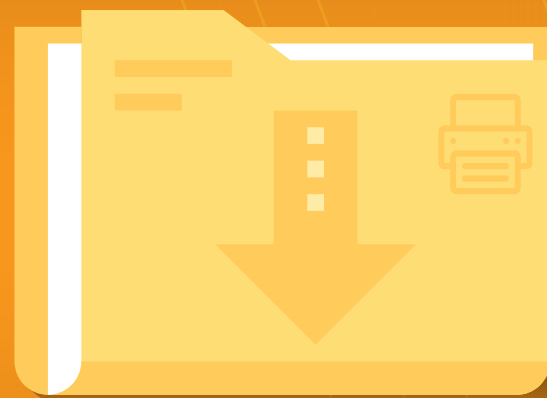
Enhance your 2D CAD experience with DraftSight Professional and these time-saving tips!

Discard duplicate or overlapping entities, create single entities from adjacent entities



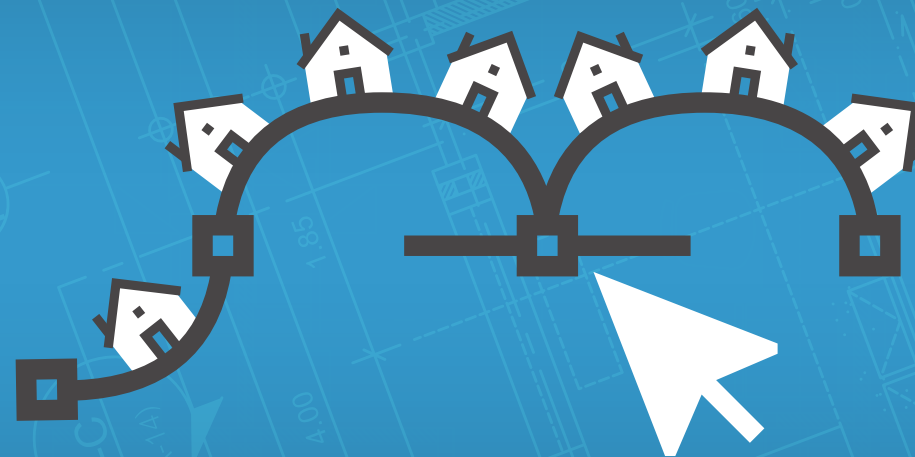
Produce clean drawings by easily removing duplicate entities or overlapping parts of entities with the Discard Duplicates command.

Save time by sending all of your drawings to the printer or plotter at once with the Batch Print command.



Batch print files or folders of files without having to open them

Place multiple of the same object along a path



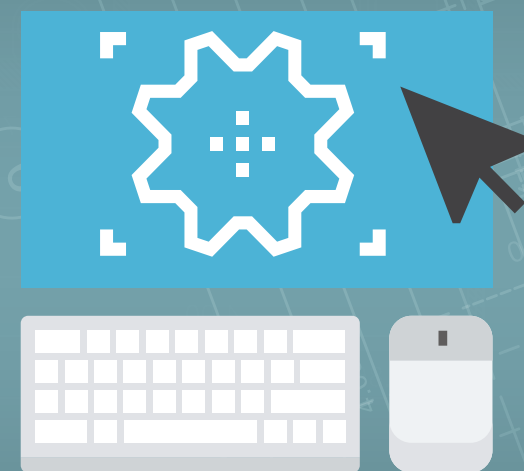
Quickly and accurately insert entities with Pattern Along a Path.

Save steps when modifying entities with the Quick Modify command.



Copy, move, rotate and scale entities with one command

Trim and extend entities by clicking and dragging the cursor



No commands needed – simply use your mouse to trim and extend entities with Power Trim.

Quickly visualize differences between similar drawings with the Draw Compare command.



Graphically compare similar drawings to find their differences

Place dimensions with widgets for automatic alignment and spacing



Get neat and legible dimensions with ease that are automatically aligned and spaced.

Easily place text along an arc by selecting “curved text” from the annotate tab.



Place curved text along an arc

DraftSight® Professional is a powerful 2D design and drafting solution that lets you create, edit, view and markup any kind of 2D drawing. It includes productivity tools, an API, and a familiar user interface that makes it easy to transition from other comparable CAD applications.

Get DraftSight Professional Now!