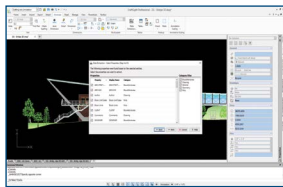


# WHAT'S NEW IN DRAFTSIGHT® 2023



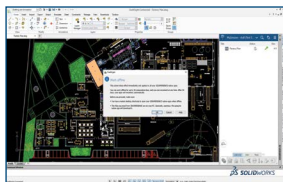
1

## Data Extraction Wizard

- Streamline the design process by reducing the manual counting and entering of table data through the extraction of selected entities and blocks within the drawing.
- Share data conveniently by saving extracted data to Microsoft® Excel or CSV format and speed up future drawing creation by reusing data tables.
- Provide design flexibility by combining drawing data with external data into a single source, while reducing errors and fostering collaboration within the organization.

### Benefits

Save time by extracting entities and blocks, and recreating drawings from exported table data.



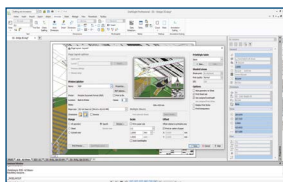
2

## Offline Mode

- Work anytime and anywhere, regardless of internet connection, with the new offline mode.
- Never lose design changes with local file saving and easily save to the 3DEXPERIENCE platform when you are back online.

### Benefits

Continue your work without interruption, even when internet connectivity is limited or lacking.



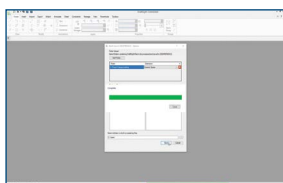
3

## Page Layout Manager

- Save time adjusting print settings by reusing saved print configurations within the drawing or drawing templates in Page Layouts.
- Provide print flexibility with additional supported print configuration formats.

### Benefits

Save time when configuring print settings by reusing existing print configurations.



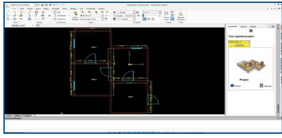
4

## Batch Upload

- Simplify data migration with batch uploads of drawings to the 3DEXPERIENCE platform and detection of duplicate files.

### Benefits

Speed up onboarding and deployment by easily migrating batch drawings to the 3DEXPERIENCE platform.

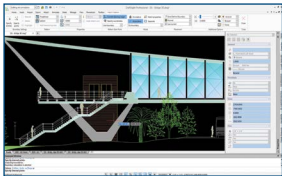


## 5 HomeByMe Integration

- Improve usability and streamline floor plan design with support for quick preview and direct floor edits through the enhanced HomeByMe add-in integration.

### Benefits

Seamlessly edit floor plan designs created using HomeByMe in DraftSight.

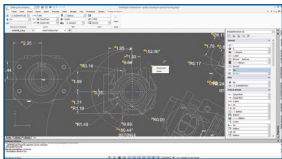


## 6 Contextual Ribbon Tab

- Optimize design workflow with a maximized viewing and working area thanks to the new contextual ribbon tab.
- Design faster with a view of only relevant options and related commands for entity creation and modifications grouped in the contextual ribbon tab.

### Benefits

Save time editing drawings with commonly used commands grouped in a single ribbon tab.

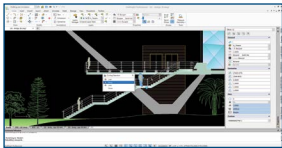


## 7 Annotation Monitor

- Quickly identify annotations that have no associativity or have been disassociated, with the new Annotation Monitor.
- Easily reassociate annotations to objects or entities to complete drawing annotation.

### Benefits

Speed up annotation-checking and quickly complete annotation of modified drawings.

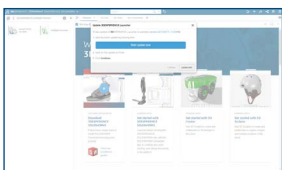


## 8 Cycling Selection

- Declutter overlapping entities and streamline design workflow with the new Cycling Selection tool.
- Display the Cycling Selection dialog box where you click, and easily select the highlighted object among the overlapping entities.

### Benefits

Save time decluttering overlapping entities and design complex projects faster.



## 9 Optional Upgrade

- Choose to skip an upgrade for an optional period of up to 14 days when a new cloud release is available.

### Benefits

Enjoy the freedom to roll out upgrades based on your own schedule and not in the middle of a project.

## Our 3DEXPERIENCE® platform powers our brand applications, serving 11 industries, and provides a rich portfolio of industry solution experiences.

Dassault Systèmes, the 3DEXPERIENCE Company, is a catalyst for human progress. We provide business and people with collaborative virtual environments to imagine sustainable innovations. By creating 'virtual experience twins' of the real world with our 3DEXPERIENCE platform and applications, our customers push the boundaries of innovation, learning and production.

Dassault Systèmes' 20,000 employees are bringing value to more than 270,000 customers of all sizes, in all industries, in more than 140 countries. For more information, visit [www.3ds.com](http://www.3ds.com).

