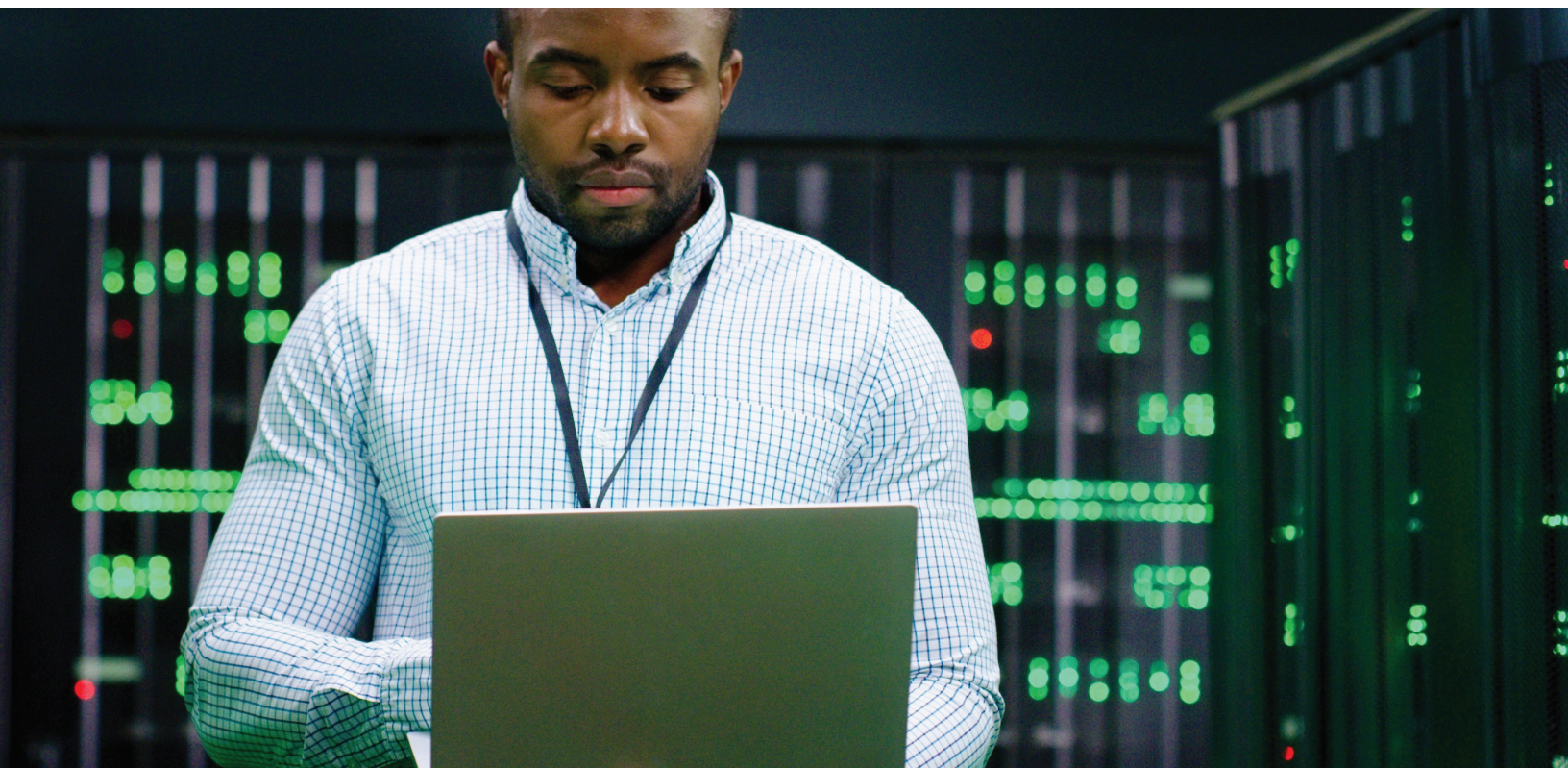




DRAFTSIGHT 2024 SYSTEM REQUIREMENTS

USE THIS INFORMATION TO ENSURE YOU ARE ALWAYS WORKING WITH A DRAFTSIGHT®-SUPPORTED AND -OPTIMIZED SYSTEM.



Windows® Operating Systems	DRAFTSIGHT 2024 SUPPORTS (Available for Professional, Premium, Enterprise, Enterprise Plus, and Mechanical versions)
Windows 10, 64-bit	●
Windows 11, 64-bit	●

HARDWARE	MINIMUM	RECOMMENDED
RAM	8 GB	16 GB
Disk Space	2 GB free hard disk space on SSD, depending on accessory applications installed	
Processor	CPU Intel® i3 processor (6th generation) or AMD® Ryzen 3 processor (2nd generation)	CPU Intel® Core™ i5, i7, or i9 processor (8th generation or newer), AMD® Ryzen 5 / 7 / 9 processor (2nd generation or newer), or better ARM Processors are not supported.
Display	Display with 1280 x 768 pixels resolution	Full HD monitor
Video Card	3D graphics accelerator card with OpenGL® version 1.4	3D graphics accelerator card with OpenGL version 3.3, or better
Mouse	Three button mouse	Wheel mouse or 3D mouse
Internet	An internet connection for installation from download and for activation (optional). Product activation requires a network interface card.	

MacOS	SUPPORTS
	(Available for Professional and Premium versions only)
Mac® v11.0 (Big Sur)	●
Mac® v12.0 (Monterey)	●
Mac® v13.0 (Ventura)	●

HARDWARE	MINIMUM	RECOMMENDED
RAM	8 GB	16 GB
Disk Space	2 GB of available hard disk space for installation	
Processor	Mac® with Intel® Core™ 2 Duo processor, or better	
Display	Display with 1280 x 768 pixels resolution, or better	
Video Card	3D graphics accelerator card with OpenGL version 1.4	3D graphics accelerator card with OpenGL version 3.3, or better
Mouse	Three button mouse	
Internet	An internet connection for installation from download and for activation (optional). Product activation requires a network interface card.	

NETWORK LICENSE MANAGER COMPATIBILITY

For DraftSight 2024 Enterprise, Enterprise Plus, and Mechanical

SolidNetWork License Manager	SUPPORTS (SNL)
SNL 2023	
SNL 2024	●

Dassault Systèmes License Server	SUPPORTS (DSLS)
DSLS R2022x	
DSLS R2023x and R2024x*	●

* Supported O/S by DSLS R2023x and R2024x are listed below.

DSLS versions	SUPPORTS (O/S)
DSLS R2023x	Windows 10 64-bit x86 (not for failover), Windows 11 64-bit x86 (not for failover), Windows Server 2016 64-bit x86, Windows Server 2019 64-bit x86, Windows Server 2022 64-bit x86
DSLS R2024x	Windows 10 64-bit x86 (not for failover), Windows 11 64-bit x86 (not for failover), Windows Server 2016 64-bit x86, Windows Server 2019 64-bit x86, Windows Server 2022 64-bit x86

A minimum of 2 GB of RAM is required; 4 GB of RAM is recommended for a standalone server, and 8 GB for failover.

Our 3DEXPERIENCE® platform powers our brand applications, serving 12 industries, and provides a rich portfolio of industry solution experiences.

Dassault Systèmes is a catalyst for human progress. We provide business and people with collaborative virtual environments to imagine sustainable innovations. By creating virtual twin experiences of the real world with our 3DEXPERIENCE platform and applications, our customers can redefine the creation, production and life-cycle-management processes of their offer and thus have a meaningful impact to make the world more sustainable. The beauty of the Experience Economy is that it is a human-centered economy for the benefit of all – consumers, patients and citizens.

Dassault Systèmes brings value to more than 300,000 customers of all sizes, in all industries, in more than 150 countries. For more information, visit www.3ds.com.



Europe/Middle East/Africa
Dassault Systèmes
10, rue Marcel Dassault
CS 40501
78946 Vélizy-Villacoublay Cedex
France

Asia-Pacific
Dassault Systèmes
17F, Foxconn Building,
No. 1366, Lujiazui Ring Road
Pilot Free Trade Zone, Shanghai 200120
China

Americas
Dassault Systèmes
175 Wyman Street
Waltham, Massachusetts
02451-1223
USA