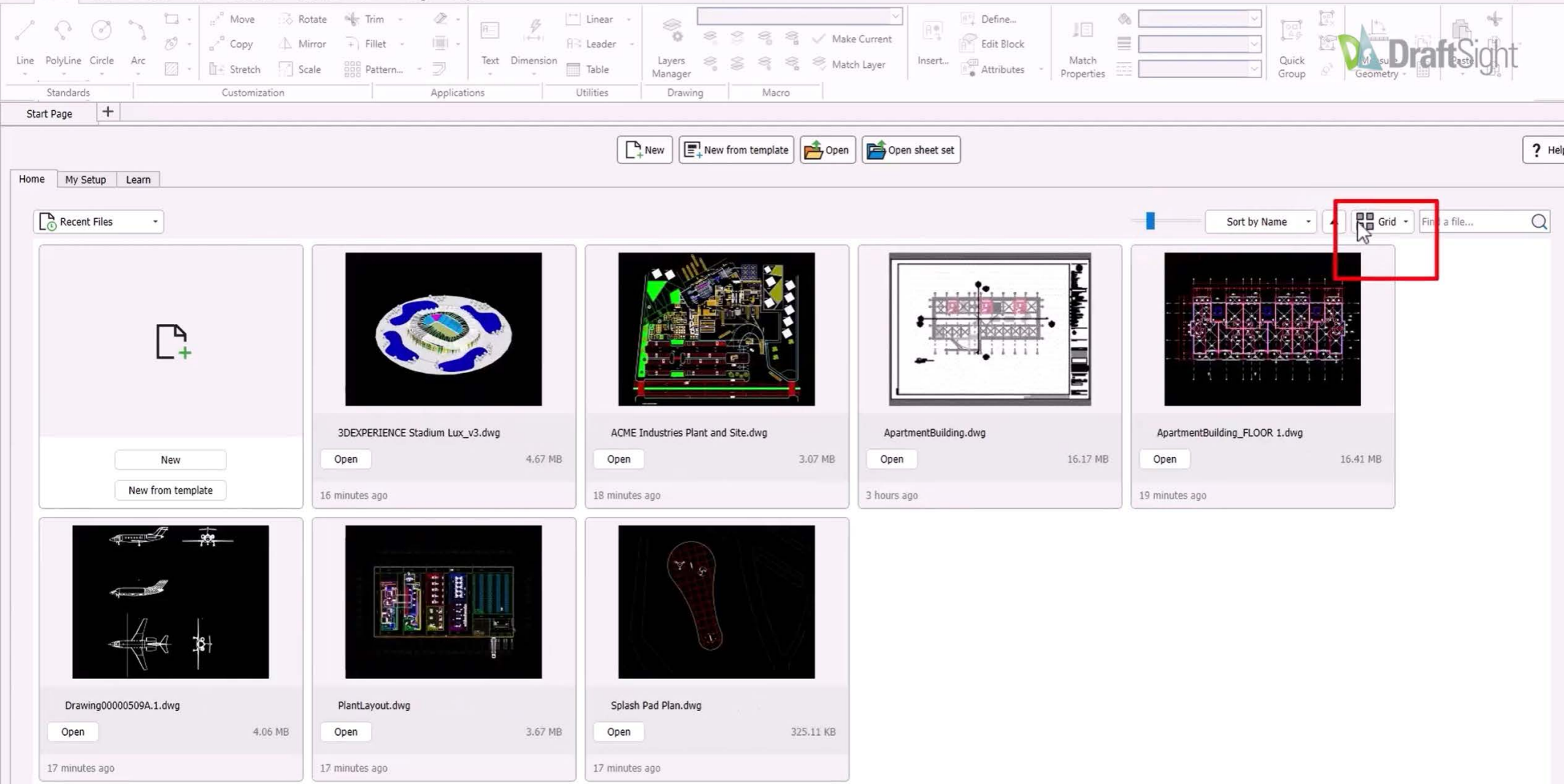


TOP 15 DRAFTSIGHT FEATURES

INTRODUCTION

DraftSight marks 15 years as a tool used by designers, engineers, and drafters who rely on precise 2D CAD drawings. Over that time, the platform has continued to add tools that support everyday drafting work, from editing geometry and organizing large drawing sets to extracting information directly from CAD files.

To recognize the milestone, this guide highlights 15 powerful DraftSight features, including automation, design, and workflow enhancements that make drafting faster and more efficient. Whether you're new to DraftSight or an experienced CAD user, these features can help you get more out of the software.



1. START PAGE

Working across multiple projects often means reopening the same drawings throughout the day. The **Start Page**, also known as the Start tab, makes these files easier to access and ensures you have immediate access to the tools and information you need to start working efficiently.

The Start Page appears when the application launches, displaying recent drawings, templates, and frequently used files in one place. Instead of browsing through folders or menus, users

can reopen active projects instantly or start new drawings from saved templates. The page also offers quick access to learning resources, product updates, and support documentation within the DraftSight interface.

In Your Workflow

The Start Page provides a centralized place to access active drawings and templates, helping teams move directly into drafting work.

Availability: *DraftSight Premium, Enterprise Plus, Mechanical*



2. BIM MODULE

Even when final deliverables are 2D drawings, many projects begin with BIM models. The **BIM Module** introduced in DraftSight 2025 allows those models to support traditional drafting workflows.

DraftSight Premium can import Revit (RVT) and Industry Foundation Classes (IFC) files and generate floor plans, sections, or elevations by defining a cutting plane through the model. The resulting views can then be placed into sheet layouts alongside other drawing documentation.

Model data can also support project schedules. Doors can be labeled directly from the model, and entity filters isolate elements for extraction into schedules that include properties such as dimensions, materials, or mark numbers. Large schedules can be

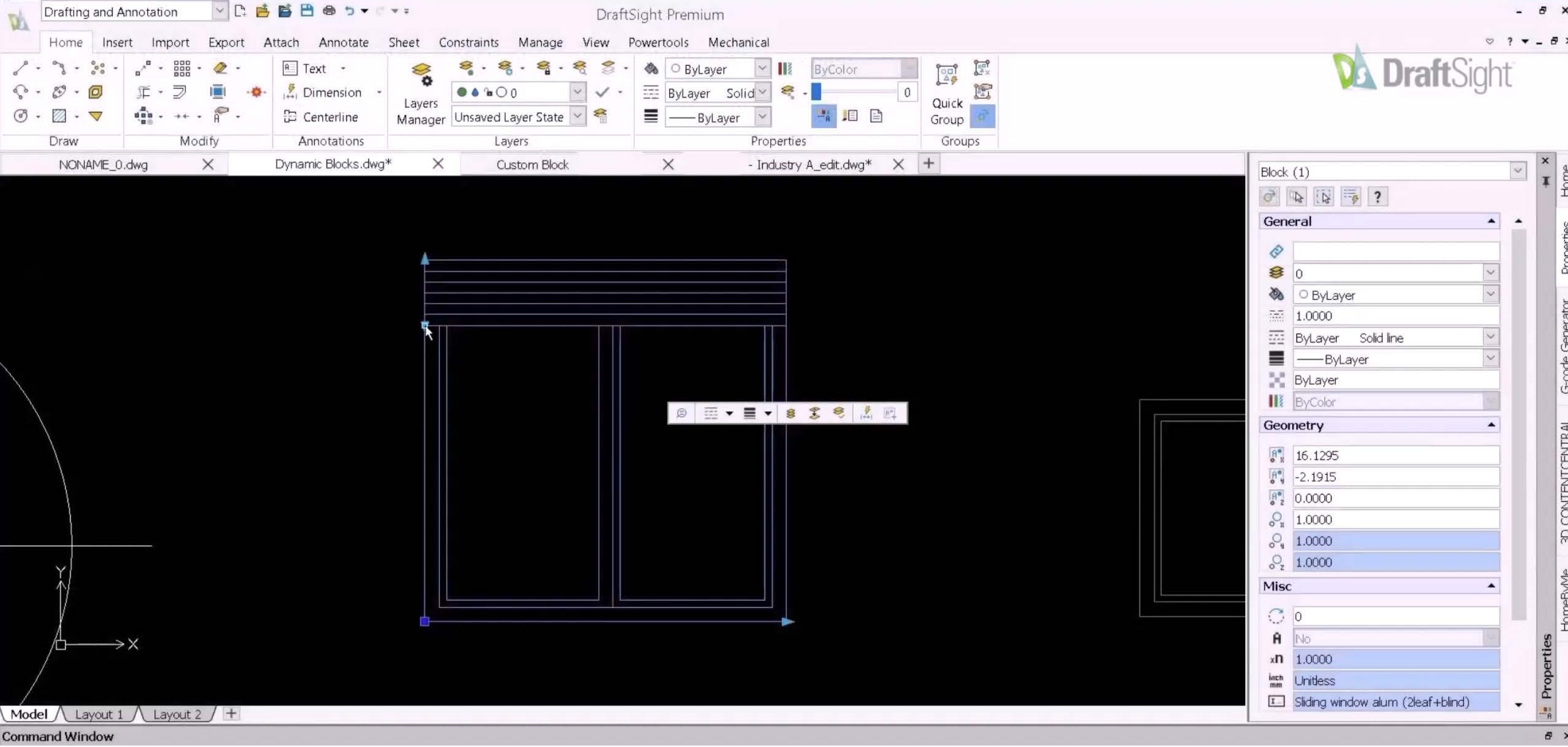
split across layouts using table breaks, and extraction settings can be saved as reusable templates.

Another feature that boosts efficiency is the ability to save and reuse data extraction templates. After setting the parameters for your first data extraction, you can replicate the process for additional floors or projects with minimal effort. This feature eliminates redundancy, enabling faster results while maintaining accuracy.

In Your Workflow

The BIM Module converts model data into 2D documentation while maintaining consistent drawing information across multiple floors or building areas.

Availability: DraftSight Premium, Enterprise Plus



3. CUSTOM BLOCKS

Blocks are widely used to maintain consistency across drawings. **Custom Blocks** extend this concept by allowing blocks to adjust automatically based on defined parameters.

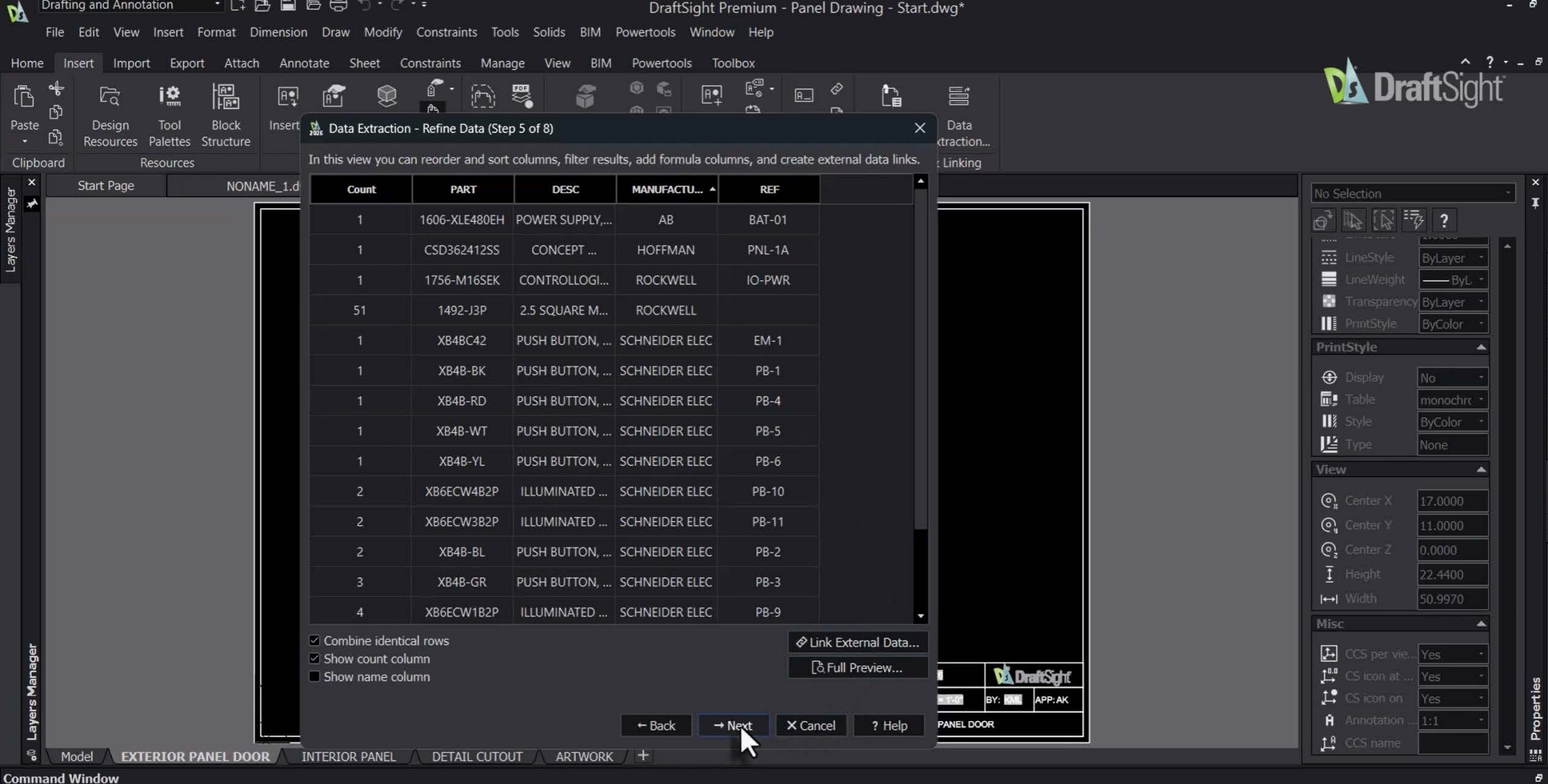
A single block definition can control dimensions, rotation, and attributes through rules and constraints. Instead of storing multiple versions of a component, you can work with variations within the same block. Custom Blocks have also become more flexible, now supporting multiple visibility states. You can toggle between states in a single block, saving you from duplicating work.

DraftSight also imports Dynamic Blocks created in other CAD systems and converts them into Custom Blocks. Visibility states allow multiple configurations to exist within a single block definition, making it easier to switch between equipment layouts or component variations during placement.

In Your Workflow

Custom Blocks reduce the number of block definitions needed in a project and simplify the management of component variations.

Availability: *DraftSight Premium, Enterprise Plus, Mechanical*



4. DATA EXTRACT

CAD drawings often contain valuable information beyond geometry. Blocks, layers, and hatches can store data used for schedules, quantities, and project documentation.

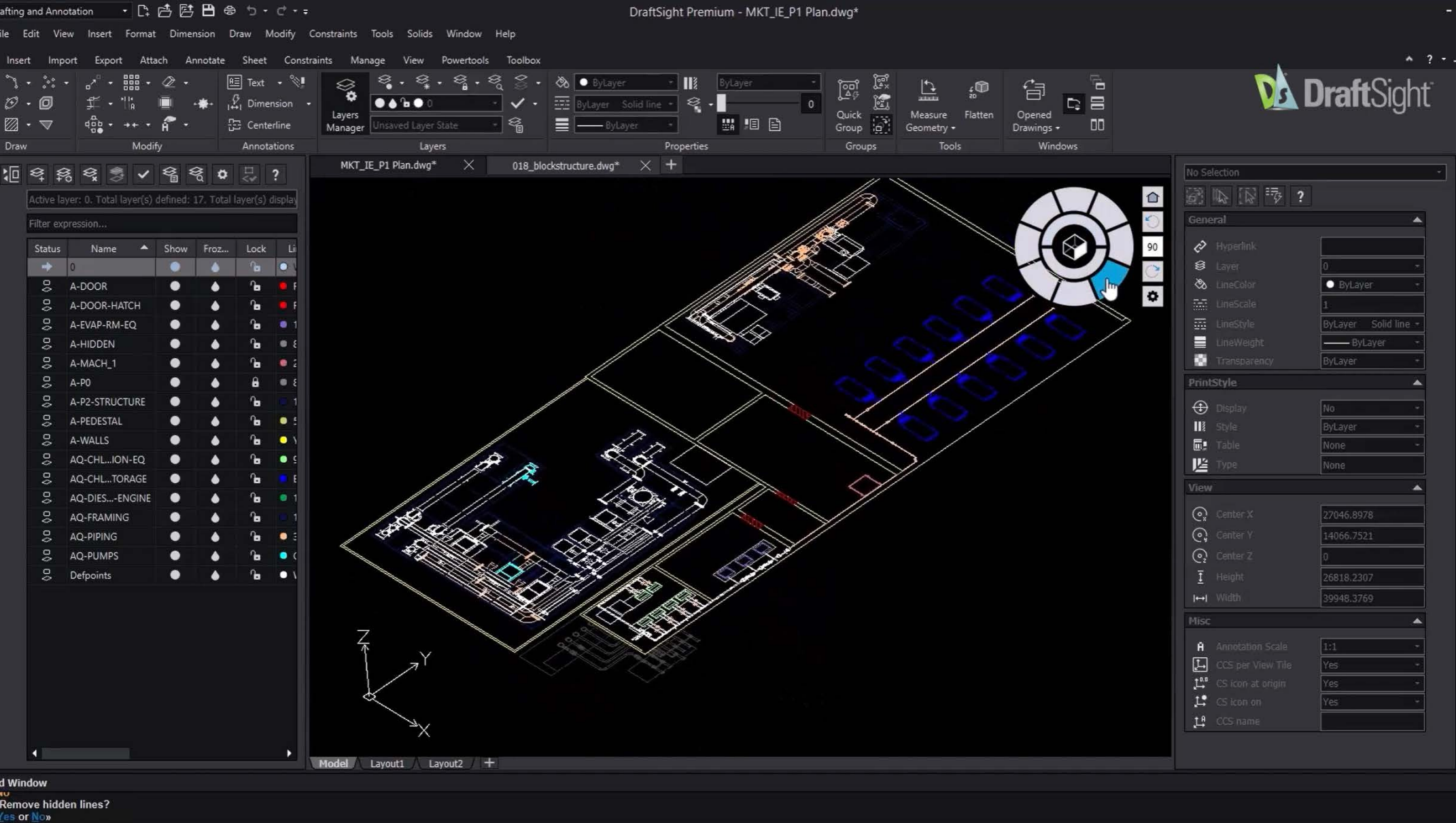
The **Data Extract** tool gathers that information and organizes it into tables or spreadsheets. Using the EXTRACTDATA command, users define the drawings to analyze, the entity types to include, and the properties to collect.

The results can appear as tables inside the drawing or be exported to Excel or CSV. This approach is used to generate equipment lists, furniture counts, drawing indexes, or flooring quantity tables based on hatch areas. Formulas within the tables can also calculate totals for estimating or reporting.

In Your Workflow

Data Extract organizes information already stored in drawings and converts it into structured project documentation.

Availability: DraftSight Premium, Enterprise Plus



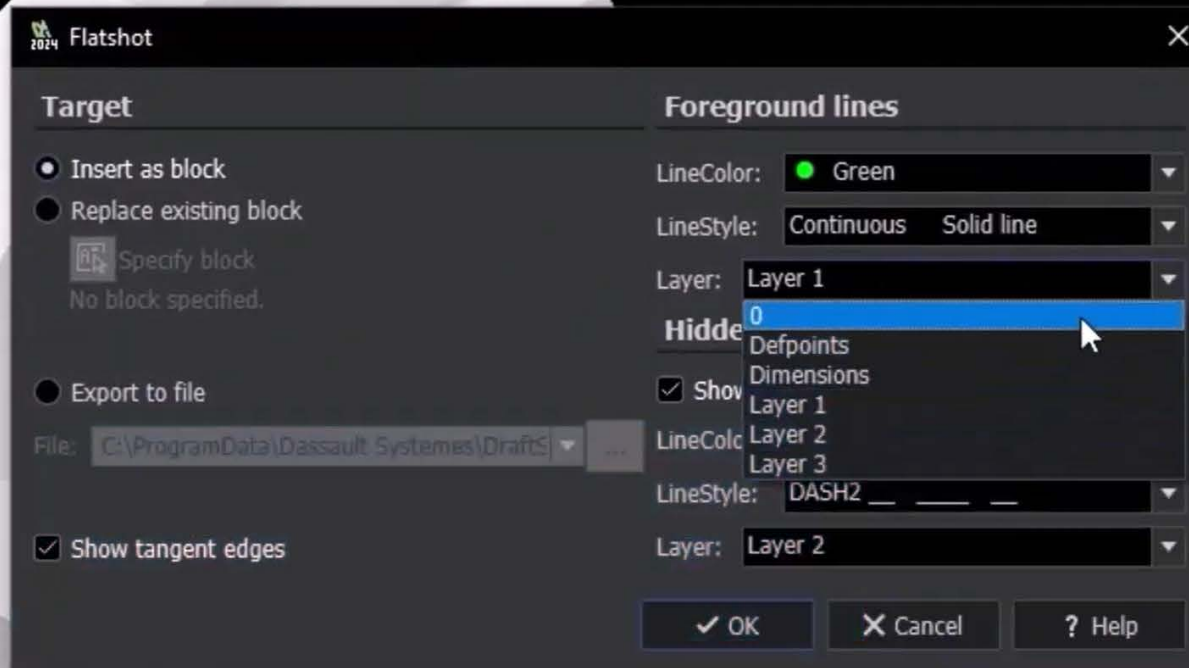
5. FLATTEN

Imported drawings and 3D models sometimes introduce small elevation values that interfere with 2D editing. The **Flatten** command removes those values by moving objects to the zero Z-plane, so they behave as true 2D entities. Once flattened, the objects interact normally with drafting tools.

In Your Workflow

Flatten removes elevation data that can disrupt standard 2D drafting operations.

Availability: DraftSight Premium, Enterprise Plus, Mechanical



6. FLATSHOT

Producing 2D documentation from 3D geometry is common in many design environments. DraftSight's **MAKEFLATSNAPSHOT** (often referred to as flatshot in similar CAD software) command generates a 2D projection directly from the current view of a 3D model.

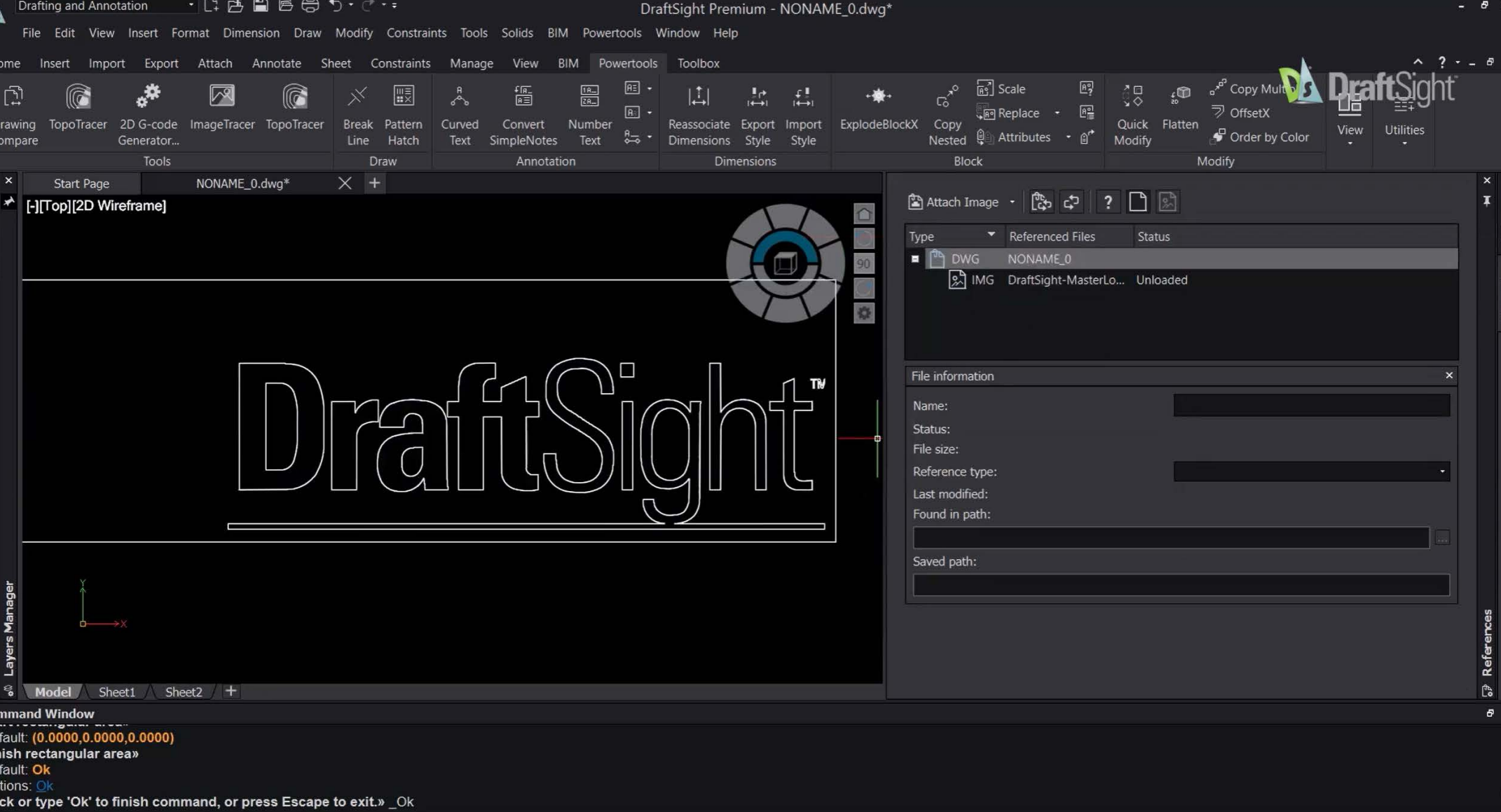
The projection captures the visible geometry and inserts it into the drawing as a block. Users can control how visible and hidden lines appear so the result matches documentation standards.

The generated view can remain in the current drawing, replace an existing block, or export it to a new DWG file.

In Your Workflow

Flatshot converts 3D geometry into usable 2D drawing views without manually recreating the design.

Availability: DraftSight Premium, Enterprise Plus, Mechanical



7. IMAGE TRACER

Have you ever faced the problem of needing to duplicate a floor plan or logo onto your CAD document, but only having a screen capture or a PDF to work with?

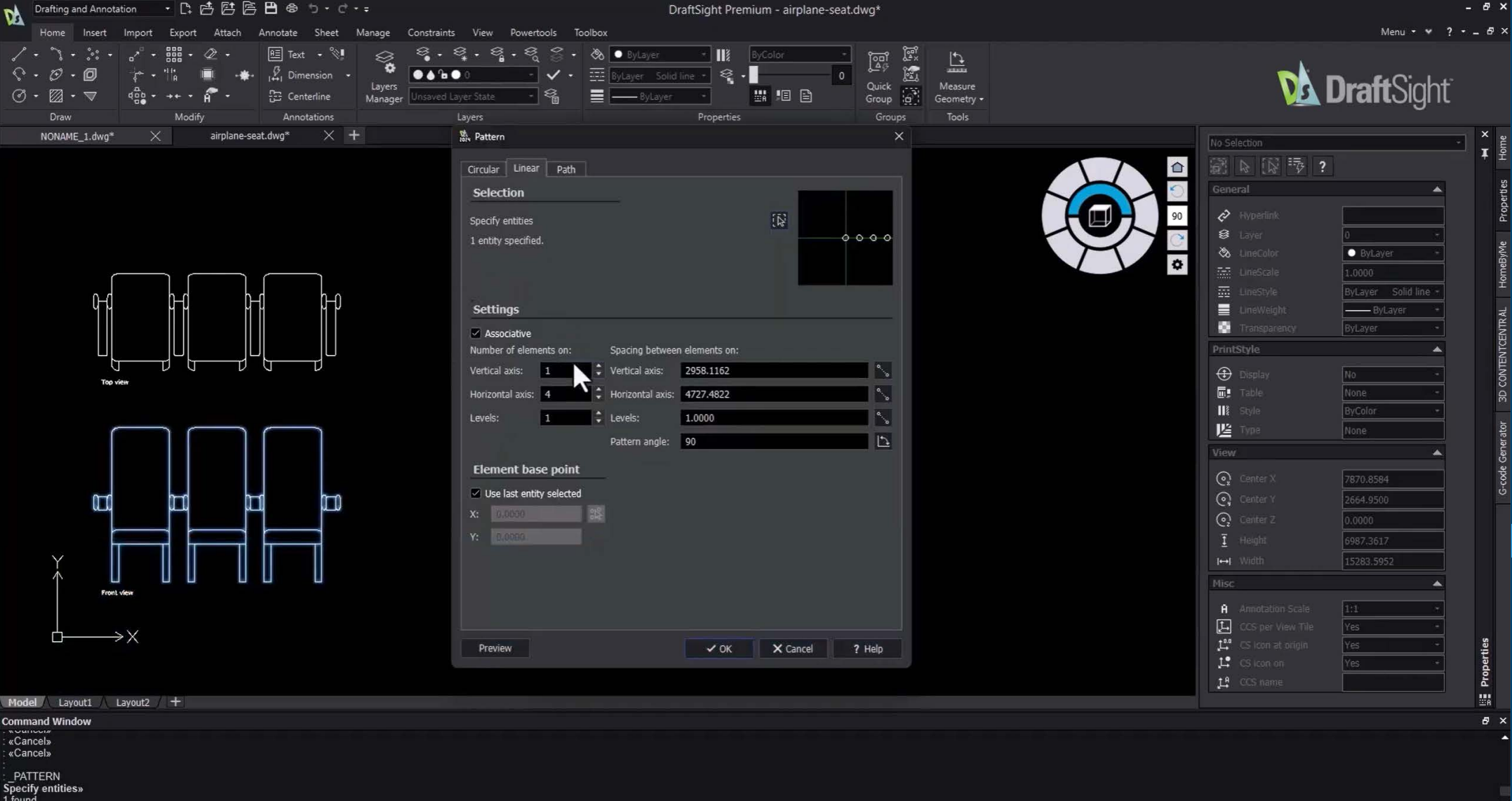
Image Tracer converts those raster images into editable CAD geometry. DraftSight supports formats such as BMP, PNG, JPG, and PDF. Once an image is attached to the drawing, the tracer analyzes selected areas and generates vector entities that match the original

lines. Detection settings control how closely the generated geometry follows the image. After tracing, the geometry can be scaled using known reference dimensions to match real-world measurements.

In Your Workflow

Image Tracer converts image-based drawings into editable CAD entities without manual redrawing.

Availability: *DraftSight Professional, Premium, Enterprise, Enterprise Plus, Mechanical*



8. PATTERN

Repeated geometry appears throughout many designs, including parking layouts, structural spacing, and equipment arrangements.

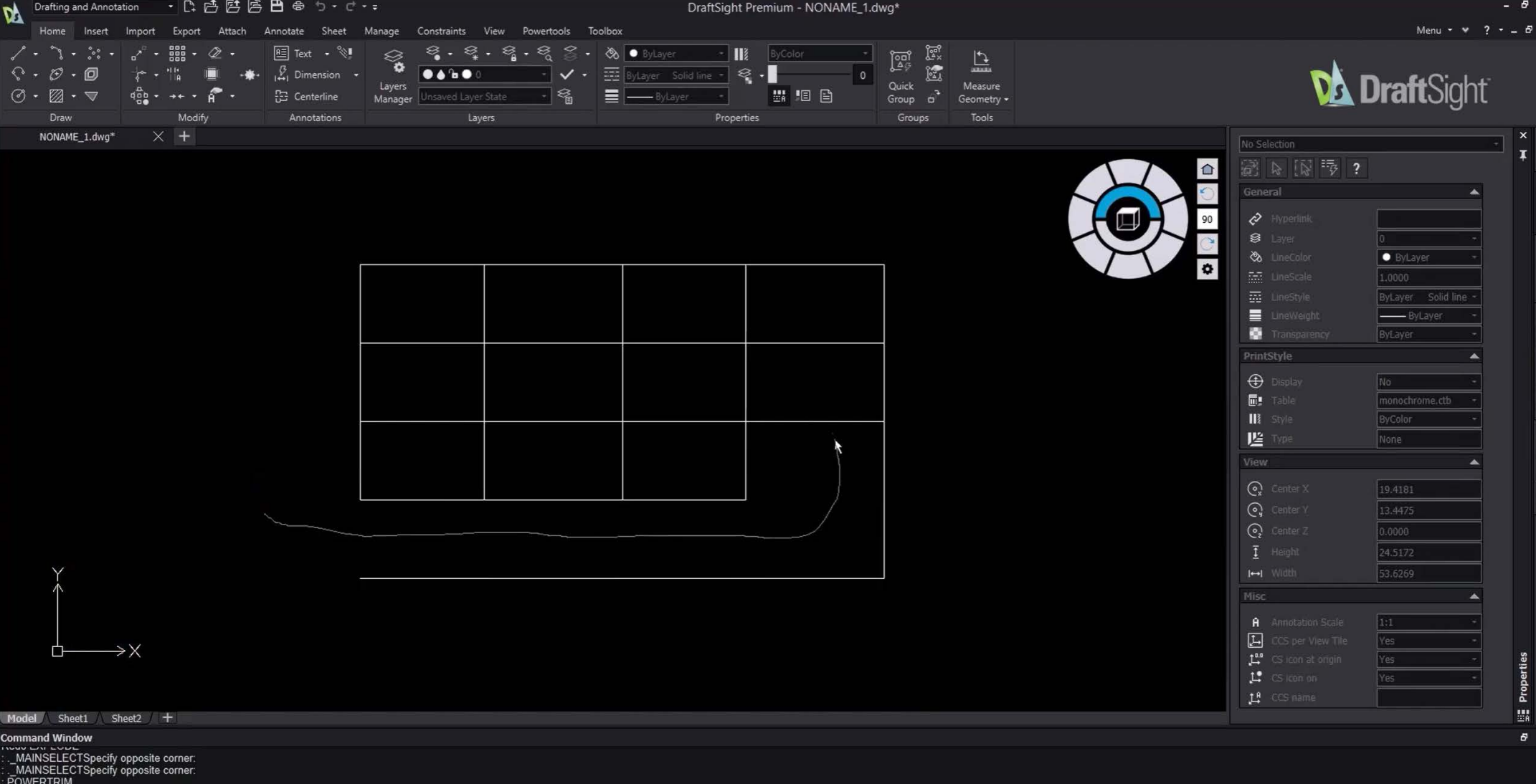
DraftSight's **Pattern** tools generate repeated objects using linear, circular, or path-based arrays. The Pattern Ribbon groups these tools together, making them easier to access during drafting. The new **Pattern Ribbon** consolidates all pattern and array tools into a single, convenient tab.

Patterns can remain associative, meaning changes to the original object automatically update the entire pattern. Handles within the drawing allow spacing and placement adjustments without rebuilding the array.

In Your Workflow

Patterns speed up the creation and modification of repeated design elements while maintaining consistent spacing.

Availability: DraftSight Professional, Premium, Enterprise, Enterprise Plus, Mechanical



9. POWERTRIM

Trimming geometry is one of the most frequent editing operations in CAD. **PowerTrim** simplifies the process by treating all objects as potential cutting edges. Instead of selecting boundaries first, users drag the cursor across segments to remove them.

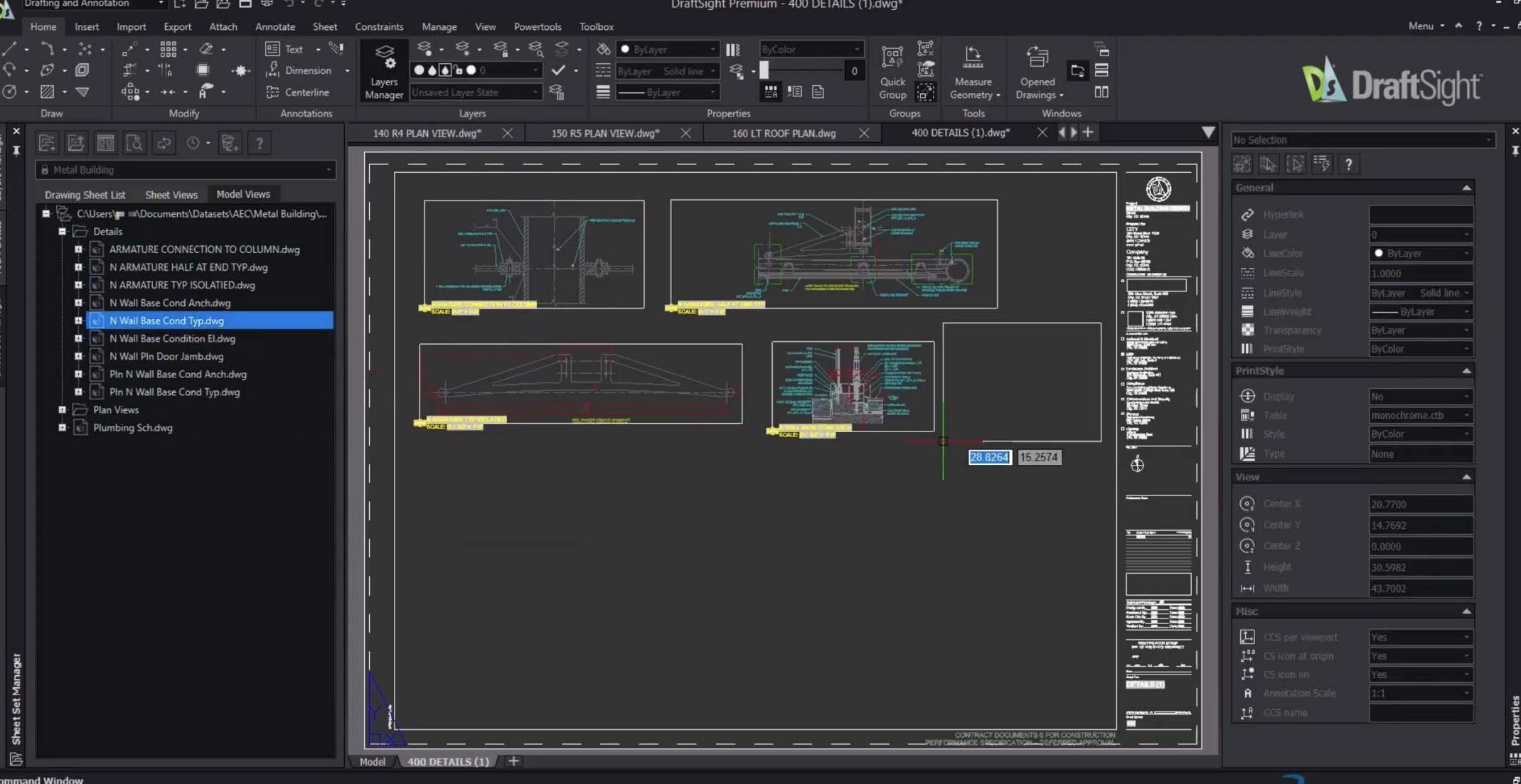
Holding the Shift key switches the mode to EXTEND, allowing objects to extend to nearby boundaries. PowerTrim can also

shorten or lengthen objects along their existing path. Additionally, you can select a second entity for it to find and extend to an inferred intersection point.

In Your Workflow

PowerTrim reduces the number of selection steps during trimming operations, speeding up one of the most common drafting tasks.

Availability: *DraftSight Professional, Premium, Enterprise, Enterprise Plus, Mechanical.*



10. SHEET SET MANAGER

Large projects often involve dozens or even hundreds of drawings. Managing those files individually can quickly become difficult.

Sheet Set Manager organizes drawings into structured sheet collections. Sheets can be created from existing drawings or generated from templates, with properties that link to title blocks and other drawing information.

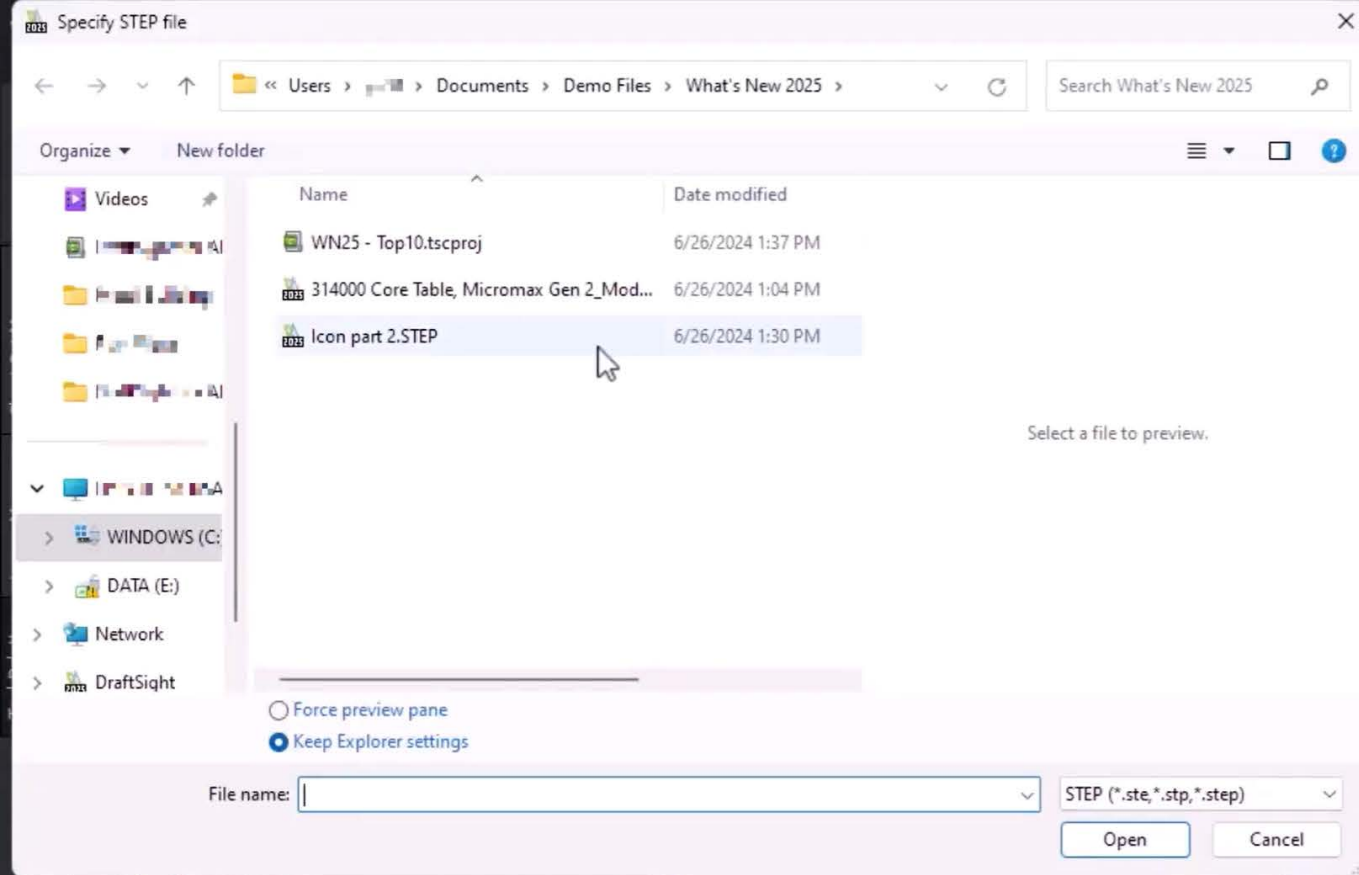
When sheet data changes, the linked information updates automatically across the entire set.

Pack and Go collects drawings and supporting resources into a single package when a project is complete, simplifying project sharing or archiving.

In Your Workflow

Sheet Set Manager keeps large drawing sets organized and maintains consistent documentation across projects.

Availability: DraftSight Premium, Enterprise Plus, Mechanical



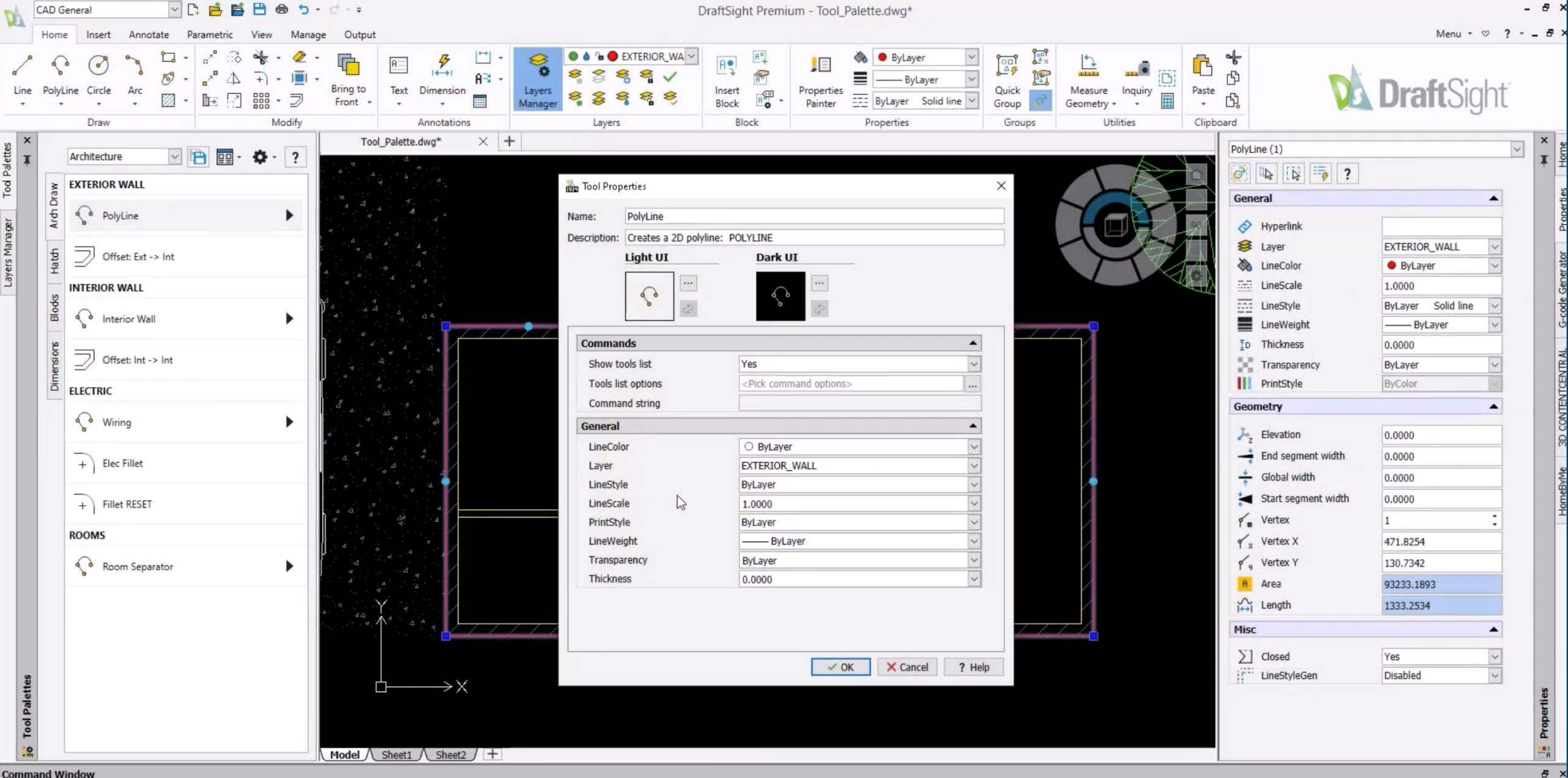
11. STEP IMPORT

Engineering projects frequently exchange data between different design systems. **STEP Import** enables those 3D models to be used for 2D documentation in DraftSight. After you import a STEP model, the geometry can serve as a reference for generating drawing views or creating flatshots. This helps teams working across design solutions share geometry without needing to recreate it.

In Your Workflow

STEP Import connects 3D design data from other systems to 2D drafting workflows.

Availability: DraftSight Premium, Enterprise Plus, Mechanical



12. TOOL PALETTES

Maintaining drawing standards often depends on inserting objects with the correct properties from the start. **Tool Palettes** store commands and elements with predefined settings. A palette tool can insert blocks, create geometry on specific layers, or place hatch patterns with defined properties.

Palettes also serve as visual libraries for commonly used blocks.

DraftSight supports importing palette libraries from other CAD systems using XTP and XPG formats.

In Your Workflow

Tool Palettes standardize drawing elements and reduce the need for property adjustments after insertion.

Availability: DraftSight Professional, Premium, Enterprise, Enterprise Plus, Mechanical



13. TOOLBOX

Mechanical drawings rely heavily on standardized hardware components. The **Toolbox** is a powerful set of tools that helps simplify the design process by allowing users to insert industry-standard hardware into their drawings. Users can insert bolts, washers, and screws; generate holes and callouts; create a bill of materials; add balloons; and much more.

These components can be inserted directly into drawings using predefined dimensions based on standards such as ANSI, DIN,

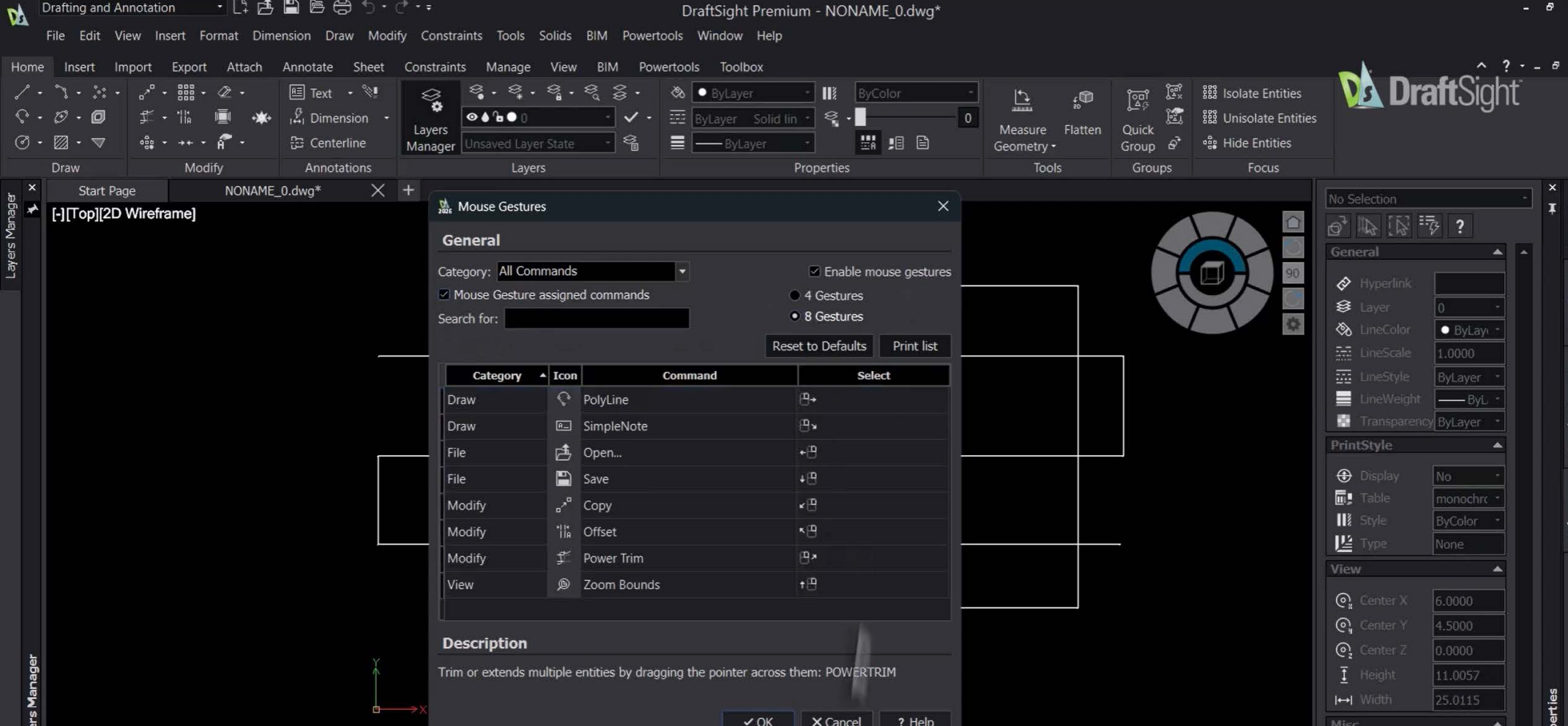
ISO, BSI, and JIS. The library also includes tools for creating holes, annotations, and surface finish symbols.

Balloon annotations can be assigned to components so DraftSight can generate a BILL OF MATERIALS listing each item and quantity.

In Your Workflow

Toolbox inserts standard hardware and documentation elements without manually modeling each component.

Availability: *DraftSight Professional, Premium, Enterprise, Enterprise Plus, Mechanical*



14. MOUSE GESTURES

Speed in CAD often relies on quick access to frequently used commands. **Mouse Gestures** enable commands to be executed through directional mouse movements.

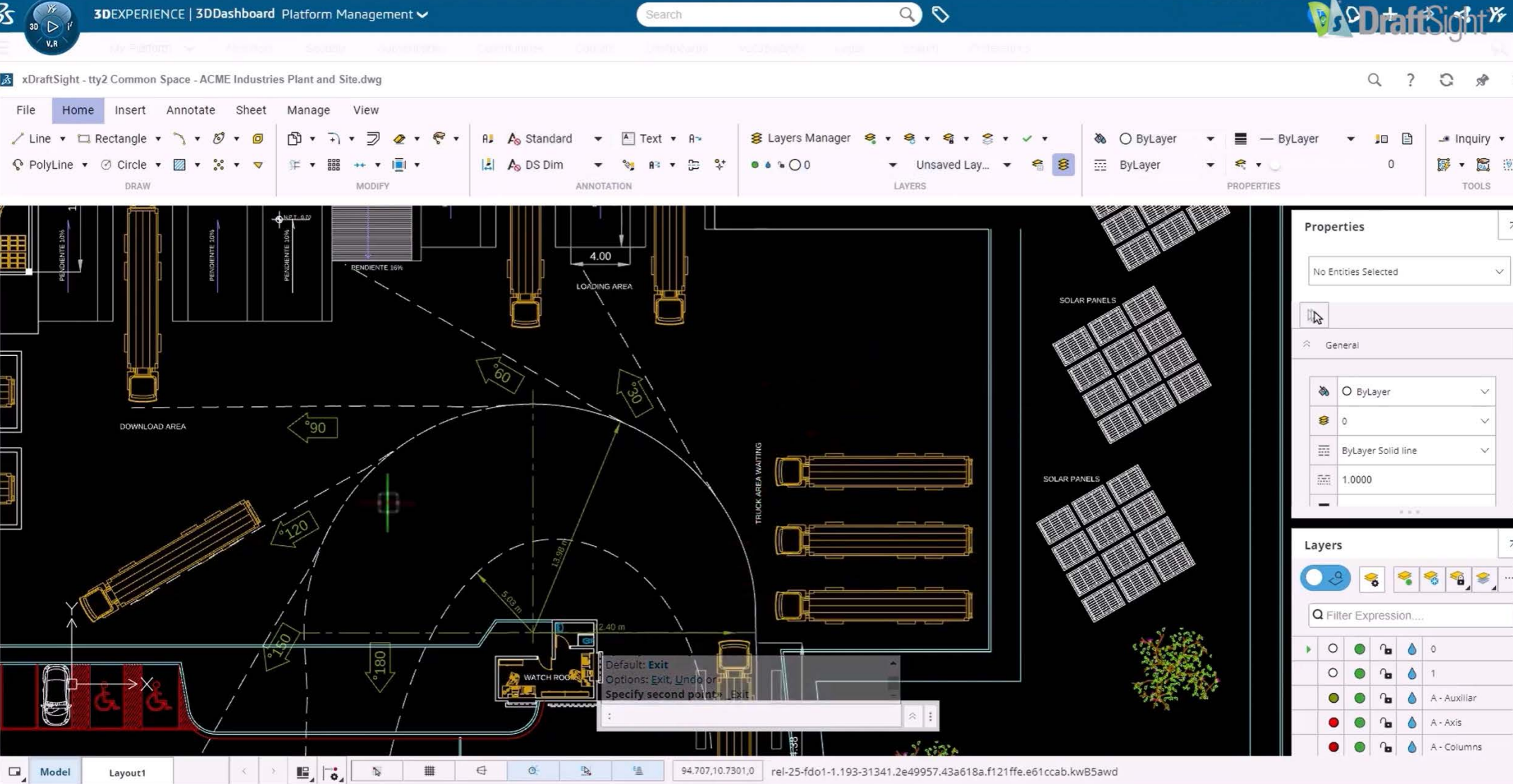
Holding down the right mouse button activates a gesture wheel, and moving the cursor in a certain direction triggers the assigned command. While you hold the mouse button and move it, a wheel appears to show your gesture assignments. You can click any icon on the wheel to execute the corresponding command. DraftSight supports gesture wheels with four or eight directions, allowing users to assign commands such as Trim, Offset, or Zoom.

You can further customize your Mouse Gestures by using the Search box to select a command you want to assign to a gesture, then using the Select drop-down to assign the gesture.

In Your Workflow

Mouse Gestures provide fast access to common commands without navigating menus or typing commands.

Availability: *DraftSight Professional, Premium, Enterprise, Enterprise Plus, Mechanical*



15. XDRAFTSIGHT

Design teams increasingly need access to drawings across multiple locations and devices. **xDraftSight** extends DraftSight drafting tools into a browser environment.

Running on the **3DEXPERIENCE®** platform, xDraftSight allows users to open, edit, and save DWG drawings directly in a web browser without installing local software.

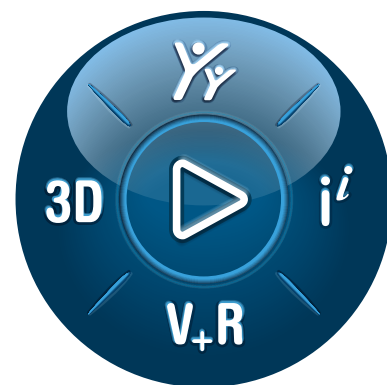
Drawings remain stored within the platform, where teams can access shared files, track revisions, and collaborate on design updates.

In Your Workflow

xDraftSight provides browser-based access to DWG drawings, allowing teams to work from any device while maintaining centralized project data.

These 15 features highlight how DraftSight supports the everyday work of CAD professionals. From faster editing and smarter block management to improved data extraction and drawing organization, each tool helps simplify common drafting tasks and keep projects moving.

Explore these capabilities in your own workflow.
Learn more at [DraftSight.com](https://www.draftsight.com) And try
[DraftSight for Free for 30 days.](#)



3DEXPERIENCE®

Dassault Systèmes is a catalyst for human progress. Since 1981, the company has pioneered virtual worlds to improve real life for consumers, patients and citizens.

With Dassault Systèmes' **3DEXPERIENCE** platform, 370,000 customers of all sizes, in all industries, can collaborate, imagine and create sustainable innovations that drive meaningful impact.

For more information, visit: www.3ds.com

Europe/Middle East/Africa
Dassault Systèmes
10, rue Marcel Dassault
CS 40501
78946 Vélizy-Villacoublay Cedex
France

Asia-Pacific
Dassault Systèmes
17F, Foxconn Building,
No. 1366, Lujiazui Ring Road
Pilot Free Trade Zone, Shanghai
200120
China

Americas
Dassault Systèmes
175 Wyman Street
Waltham,
Massachusetts
02451-1223
USA

**Virtual Worlds
for Real Life**



2016 © Dassault Systèmes. All rights reserved. **3DEXPERIENCE**, the 3DS logo, the Compass icon, IPWE, 3DEXCEL, 3DVA, BIOVA, CATIA, CENTRIC PDM, DELMIA, ENOVIA, GEOPAK, MEDIPRO, NETWORK, OUTSCAPE, SIMULIA and SOLIDWORKS are commercial trademarks or registered trademarks of Dassault Systèmes, a European company, incorporated under French law, and registered with the Versailles trade and companies registry under number 322 306 440, or its subsidiaries in the United States and/or other countries. All other trademarks are owned by their respective owners. Use of any Dassault Systèmes or its subsidiaries trademarks is subject to their express written approval.