

DraftSight® Enterprise

DraftSight Enterprise Plus

Installation and Configuration Quick Guide

(SNL & DSLS)

For DraftSight 2022 Onwards

Last Update: November 2022

Revision 2.0



3DEXPERIENCE®



Table of Contents

1) EXECUTIVE SUMMARY.....	3
2) SOLIDWORKS SOLIDNETWORK LICENSE MANAGER (SNL) PROCESS OVERVIEW..	4
A) WHAT YOU NEED.....	4
B) PREPARING FOR THE SNL INSTALLATION	5
C) REVIEW THE PREREQUISITES FOR THE APPLICATIONS	5
3) INSTALLING THE SOLIDWORKS SOLIDNETWORK LICENSE MANAGER.....	6
A) TYPICAL SETUP OF THE LICENSE SERVER AND CLIENT COMPUTERS	6
A) INSTALLING SNL ON THE LICENSE SERVER COMPUTER	7
B) LICENSE MANAGER AND PRODUCT ACTIVATION	9
4) ADDING THE DRAFTSIGHT SERIAL NUMBER TO AN EXISTING SNL INSTALLATION	13
A) DETERMINING THE SNL VERSION IN USE	13
A) ADDING AND ACTIVATING THE DRAFTSIGHT SERIAL NUMBER	14
B) LICENSE MANAGER AND PRODUCT ACTIVATION	17
5) INSTALLING DRAFTSIGHT ON CLIENT COMPUTERS MANUALLY	21
6) DEPLOYING A DRAFTSIGHT INSTALLATION	24
7) DASSAULT SYSTEMES LICENSE MANAGER (DSLS) PROCESS OVERVIEW	25
A) WHAT YOU NEED.....	25
B) PREPARING FOR THE DSLS INSTALLATION	25
A) REVIEW THE PREREQUISITES FOR THE APPLICATION.....	25
i) <i>DSLS-supported operating systems.....</i>	<i>26</i>
ii) <i>DraftSight-supported operating systems and system requirements.....</i>	<i>26</i>
8) INSTALLING THE DS LICENSE MANAGER.....	26
A) PRELIMINARY INFORMATION.....	26
A) TYPICAL SETUP OF THE DSLS LICENSE SERVER AND CLIENT COMPUTERS.....	26
B) INSTALLING DSLS ON THE LICENSE SERVER COMPUTER	27
ii) <i>Connect to the license server</i>	<i>31</i>
9) CONFIGURATION AND ACTIVATION OF THE DS LICENSE SERVER.....	32
A) CONFIGURING THE LICENSE SERVER.....	32
B) ACTIVATING THE DS LICENSE SERVER	33
C) MANAGING LICENSES	35
10) STARTING AND STOPPING THE DS LICENSE SERVER.....	35
11) INSTALLING DRAFTSIGHT ON THE WORKSTATIONS (MANUAL)	39
A) DRAFTSIGHT INSTALLATION DEPLOYMENT	41

1) Executive Summary

This guide provides DraftSight users with information about the installation process for the DraftSight Enterprise and DraftSight Enterprise Plus software.

The installation and configuration process requires information that you receive from other sources for the licensing process and product activation.

The guide also provides information about how to access the installation applications.

Be aware that the links and access paths to other resources mentioned in this document could change in the future. If you experience any difficulty accessing files or information, contact your SOLIDWORKS reseller.

Before installing the applications, make sure that the client computer meets or exceeds the system requirements.

This purpose of this guide is to serve as a quick-reference of the installation process. However, the guide does not contain exhaustive information or complete screen images of the full configuration experience. If you require more information about the applications or about specific processes or functionality, refer to the [online Help](#) and the DraftSight Configuration and Basic Customization guide.

Notes:

- The information in this document uses the DraftSight 2022, SolidNetWork Licensing 2022 SP0 and Dassault Systèmes License Server R2022x versions for process references, prerequisites and supported platforms.
- For additional information about the installation or setup of the Licensing Manager application, refer to the corresponding License Manager Installation and Configuration Guide documentation included with the software installation package.

2) SOLIDWORKS SolidNetWork License Manager (SNL) Process Overview

This guide covers the installation process for the SOLIDWORKS SolidNetWork License (SNL) Manager software on a supported Windows® operating system (OS), and the DraftSight Enterprise and DraftSight Enterprise Plus versions software on client computers. The guide offers two scenarios for SNL installation and configuration:

- Scenario 1: Installing SNL for the first time.
- Scenario 2: Adding the DraftSight Enterprise or DraftSight Enterprise Plus entitlement to an existing SNL installation.

a) What you need

- A DraftSight Enterprise license key or serial number
- The SOLIDWORKS SolidNetWork License Manager installation files
- The DraftSight installation files

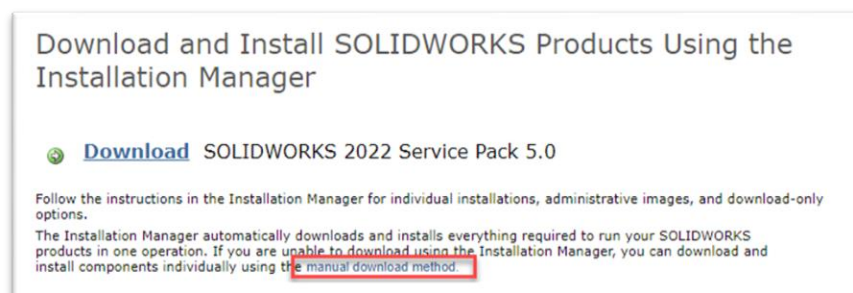
You can download these installation files from the following locations on the internet:

DraftSight installation files:

1. <https://www.draftsight.com/support/draftsight-download>

Download the SNL installation file from the SOLIDWORKS Customer Portal.

2. Log in to the Customer Portal and go to the Downloads area.
3. https://www.solidworks.com/sw/support/subscription/downloads/download_package.htm
4. In the list of products, click SOLIDWORKS.
5. Read and accept the *Customer License And Online Services Agreement* (CLOSA), after which the download page appears.
6. Click the link for the 'manual download method'



- On the next page, select the required options from the drop down lists then click 'Continue'.

Manual Installs
SOLIDWORKS 2022 Service Pack 5.0 Downloads

Update to: SOLIDWORKS 2022 Service Pack 5.0

Upgrading from Service Pack	2022 Service Pack 0.0 ▼
Language	English ▼
SolidWorks Product	SOLIDWORKS Standard ▼

[Continue](#)

- Under **Step 5 - Optional updates**, download the SolidNetWork License Manager. (https://www.solidworks.com/sw/support/subscription/downloads/download_package.htm)

Step 5 - Optional updates if these components are installed and licensed.

Product	Size	Notes
SOLIDWORKS API SDK	1.47 MB	
Check For Updates	6.48 MB	
SOLIDWORKS Document Manager API SDK	46.32 MB	
eDrawings API SDK	1.85 MB	
SolidNetWork License Manager	40.17 MB	
SOLIDWORKS PCB Services	158.59 MB	

b) Preparing for the SNL Installation

To ensure a successful installation, before installing either the License Manager on your server or the DraftSight software on the workstations, it is important that you review the system requirements and understand the administrative permission requirements. Be sure to address the following considerations.

c) Review the prerequisites for the applications

Confirm that the computers on which you are going to install the SNL and DraftSight software meet or exceed the minimum system requirements. Noncompliance with the system requirements or supported platforms might cause performance problems or errors when using SNL or DraftSight.

The *License Manager* requirements for the DraftSight Enterprise 2022 and DraftSight Enterprise Plus 2022 versions are either of the following:

- SolidNetWork License (SNL) version 2022 SP0 or later (refer to [section 4](#))
- Dassault Systèmes License Server (DSLS) version R2022x or later (refer to [section 10](#))

Any change in the prerequisites does not require the replacement of licenses in use. You can continue to use valid licenses until their expiration date. In the same way, previous DraftSight installations do not require a mandatory update.

SNL-supported operating systems

For a list of operating systems that SNL supports, refer to the Server Products section of the SOLIDWORKS System Requirements web page:

<http://www.solidworks.com/sw/support/SystemRequirements.html>

DraftSight-supported operating systems and system requirements

With every DraftSight release, you can download a document that describes the supported on systems and system requirements by clicking the Download Media link on the following web page:

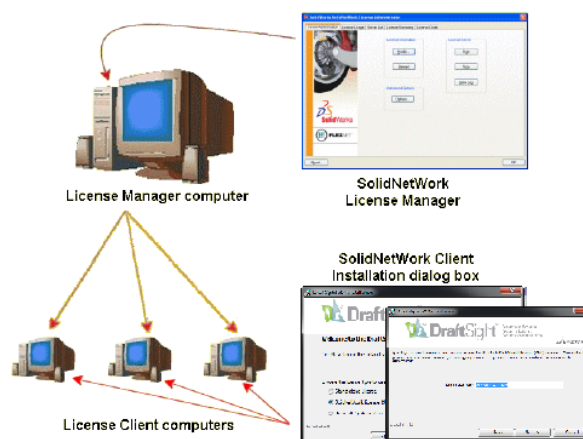
<https://www.DraftSight.com/media/system-requirements-DraftSight>

3) Installing the SOLIDWORKS SolidNetWork License Manager

This section describes a typical setup for the license server and license client computers. It includes things to consider before and when performing the installation.

a) Typical setup of the license server and client computers

A license server helps the administrator to ensure license control compliance with purchased license products and license clients. The following image depicts a typical setup scenario for the license server and client computers.



The SolidNetWork License Manager software supports the assignment of licenses by distributing the licenses to multiple client computers on the network. This allows the number of users to exceed the number of licenses by using *floating licenses*.

Installation and activation of the SolidNetWork License Manager software happens only on the license manager computer.

The license client computers do not require the installation of any additional SolidNetWork-specific software.

If you specify the **SolidNetWork License (SNL)** option when installing DraftSight on the client computers, SNL identifies the computer as a SolidNetWork license client.

The DraftSight Installation Manager prompts you for the SolidNetWork license manager computer name and port number to connect the client computer to the License Manager.

The License Manager and all license clients must have TCP/IP connectivity.

a) Installing SNL on the License Server computer

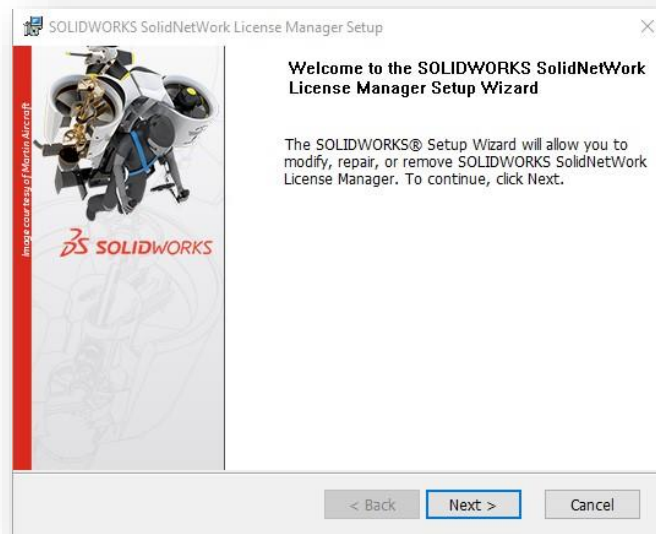
This section explains how to install the SNL License Server on a single computer running on a supported Windows OS. Installation and uninstallation rely on Windows-compliant tools that enable anyone familiar with Windows procedures and concepts to install the software without assistance.

To install the License Manager software:

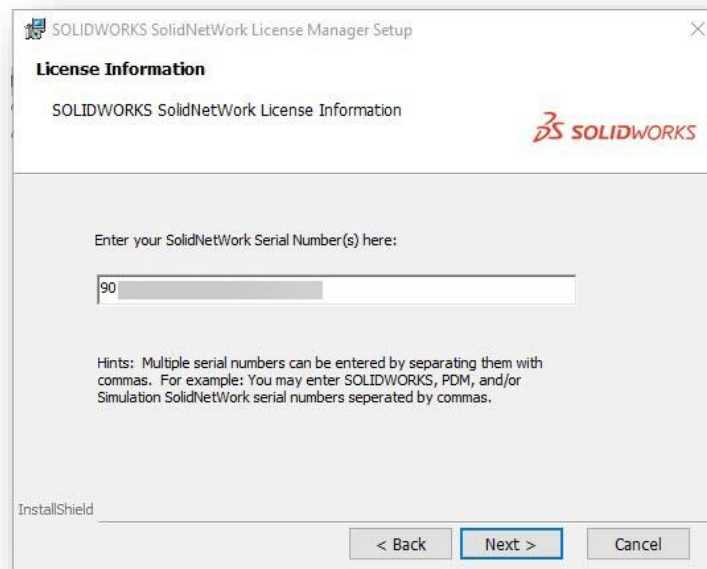
1. Log in as an administrator. You must either belong to the Administrators group or have the same administrative privileges as members of the **Administrators** group. Otherwise, you might not be able to start the installation.
2. Download the installation program from the SOLIDWORKS Customer Portal.
3. Retrieve the serial number that you received from the SOLIDWORKS Order Management team.
4. Browse to the location where you saved the *SolidWorks SolidNetWork License Manager.msi* file and double-click the file to start the installation.



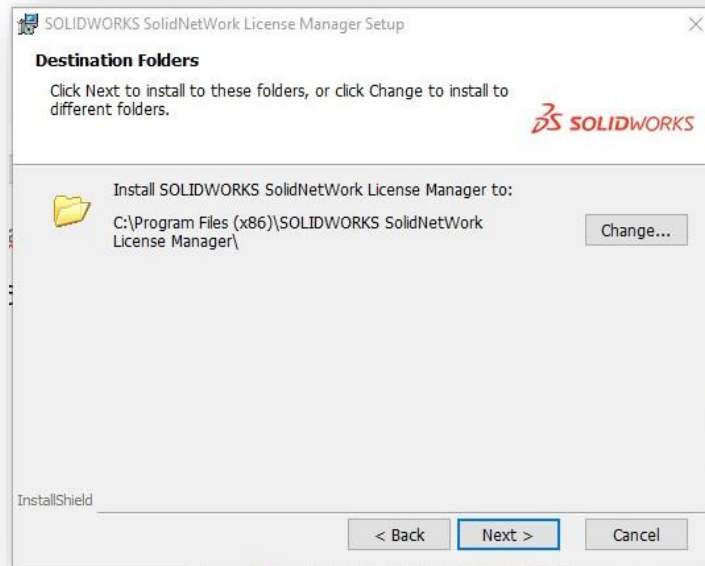
5. The **SOLIDWORKS SolidNetWork License Manager Setup** dialog box appears. Click **Next**.



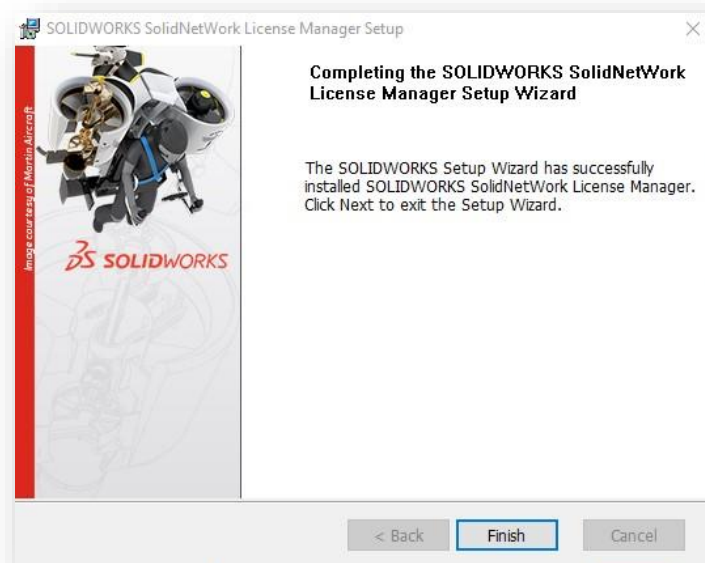
6. In the **License Information** dialog box, enter your serial number and then click **Next**.



7. In the **Destination Folders** dialog box, click **Next** to accept the default installation folder or click **Change** to select a different destination folder.
8. In the next dialog box, click **Install**.



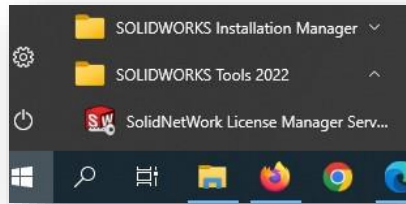
9. In the *Completing SNL Setup* dialog box, click **Finish**.



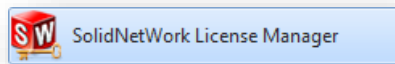
After finishing the installation, the *SOLIDWORKS SolidNetWork License Manager Setup* dialog box closes. The next step is to activate the DraftSight license.

b) License Manager and Product Activation

1. From the Windows Start menu, run the **SolidNetWork License Manager Server** application.



If available, you can also click the **SolidNetWork License Manager** icon as shown below.

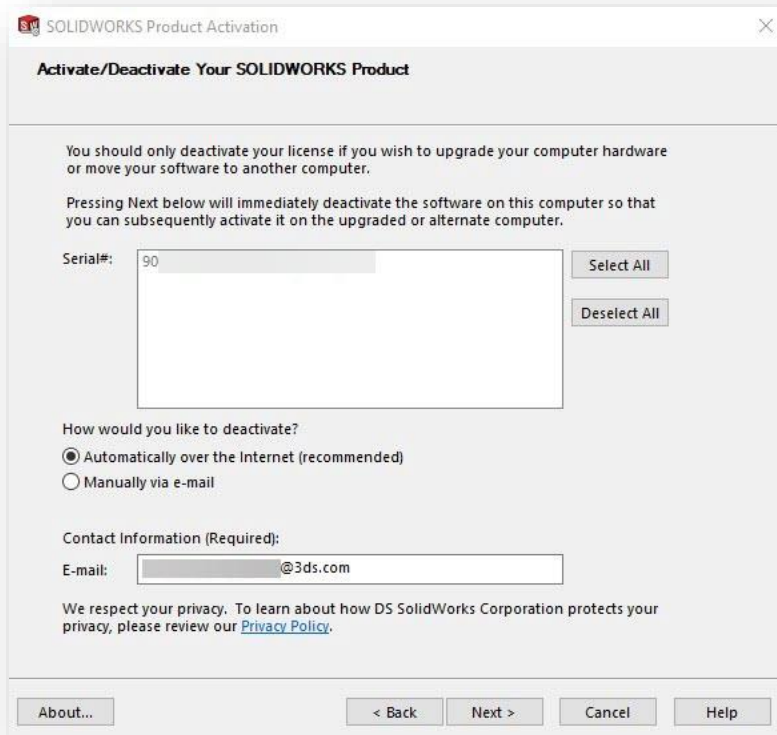


2. When you see the prompt to activate, click **Yes**.



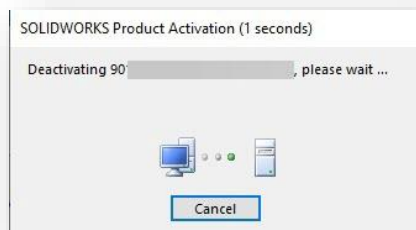
The **SOLIDWORKS Product Activation** dialog box appears. The computer name and port number are already populated.

3. Click **Next**. The **Activate/Deactivate Your SOLIDWORKS Product** dialog box displays the serial number.

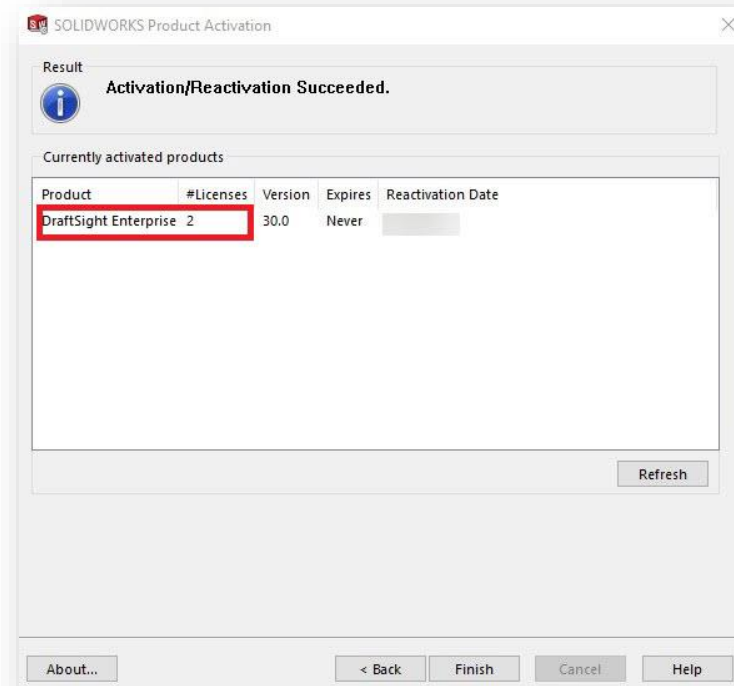


4. Select the **Automatically over the Internet (recommended)** option and enter a valid email address. Click **Next**.

The activation is in progress.

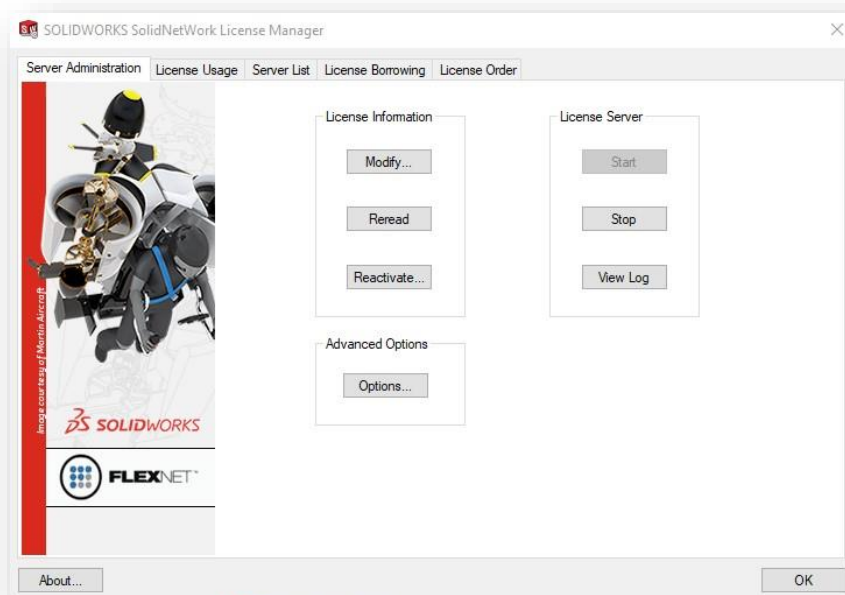


If the activation is successful, the dialog box displays the number of licenses entitled for the serial number. For example, the following image shows that the DraftSight Enterprise product has an entitlement of two licenses.

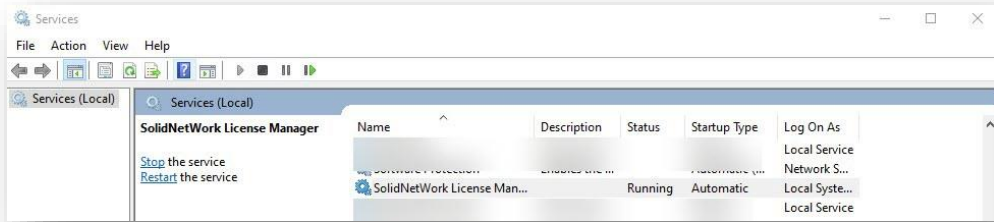


5. Click **Finish** to close the SOLIDWORKS Product Activation dialog box.

The **SOLIDWORKS SolidNetWork License Manager** dialog box appears.



6. You must click **Start** the License Server service. Optionally, you can start the license service from the **Services** console. *C:\ProgramData\Microsoft\Windows\Start Menu\Programs\Administrative Tools\services.lnk*



At this point, the SOLIDWORKS SolidNetWork License Manager is operational. The next step is to install DraftSight on the client computer. See [section 9](#) of this document.

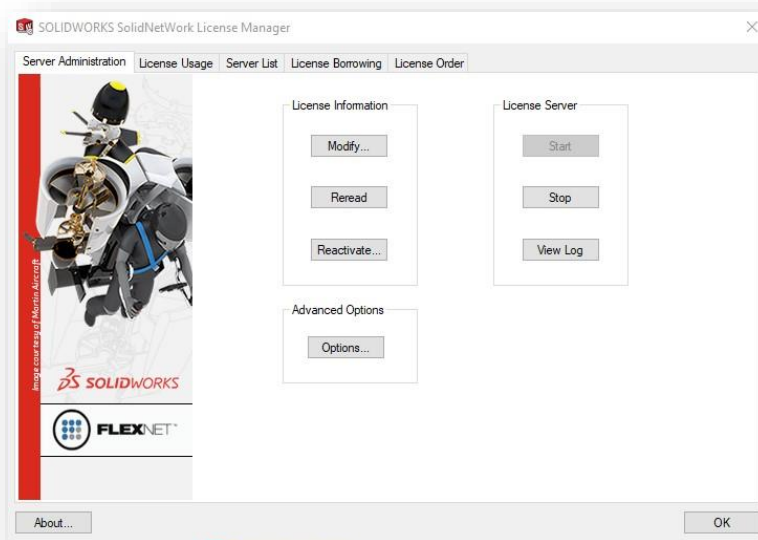
4) Adding the DraftSight Serial Number to an existing SNL Installation

This section discusses the required steps to add the DraftSight serial number to an existing SNL installation. As stated earlier, to run the DraftSight 2022 version, the application requires SNL version 2022 SP0 or later.

a) Determining the SNL version in use

To avoid any setbacks when configuring the applications, the recommendation is that you first verify that the SNL version already installed meets or exceeds the licensing requirements for DraftSight 2022, before adding the DraftSight serial number to your SNL installation. Follow these steps:

1. Open the SNL License Manager.



2. Click **About**. This displays the active version number of the SOLIDWORKS SolidNetWork License Manager application.

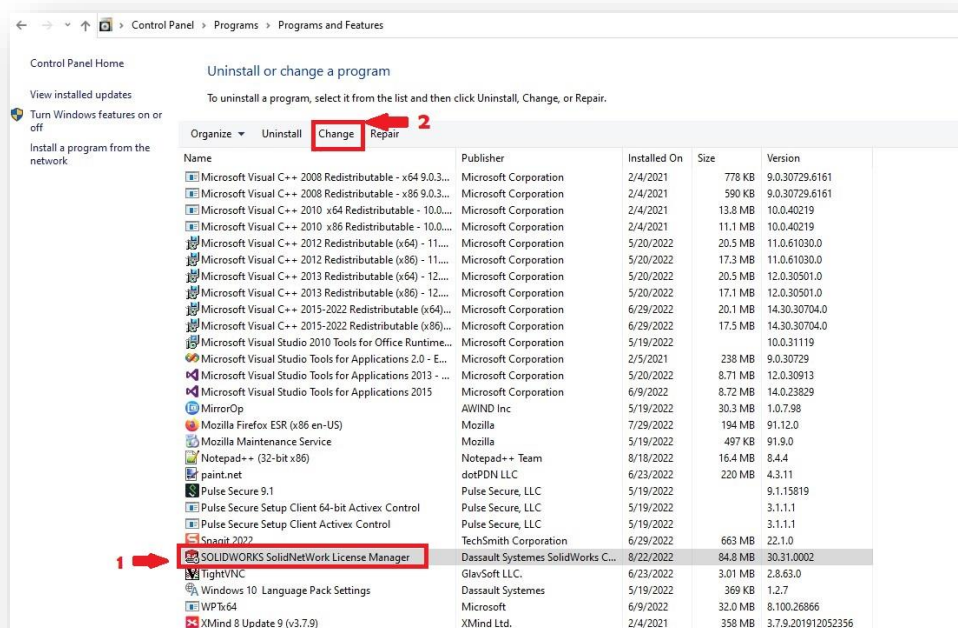


The leading numbers of the version number correspond to the required SNL version (SNL 2022 SP 2). If these numbers are different, you must upgrade the License Manager software before adding the DraftSight serial number. For more information about how and where you can access the required SNL version, see [section 2a](#).

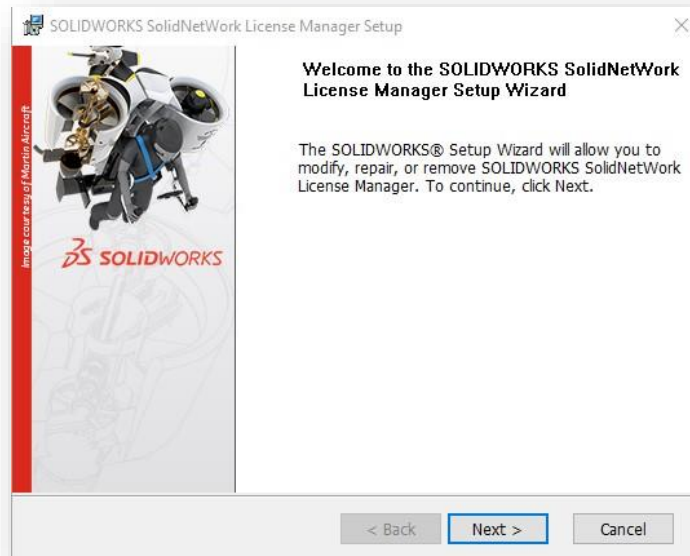
a) Adding and Activating the DraftSight Serial Number

To add the DraftSight serial number to the existing SNL installation on the server, follow these steps.

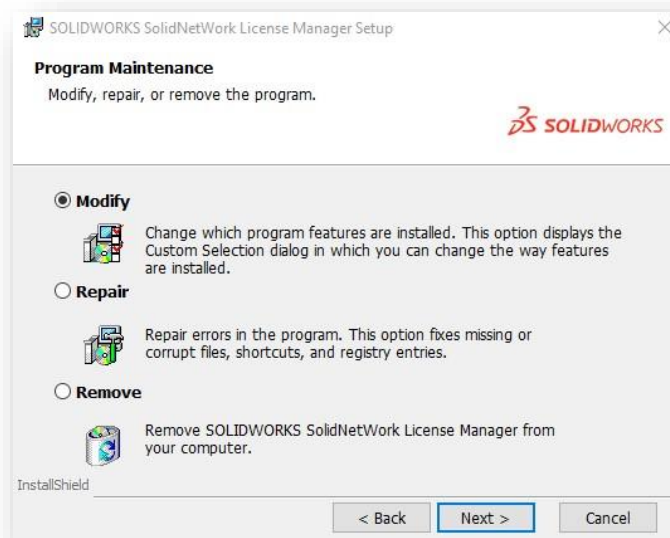
1. Go to **Control Panel > Programs > Programs and Features**.
2. As depicted in the next image, select the SOLIDWORKS SolidNetWork License Manager program and then click **Change**.



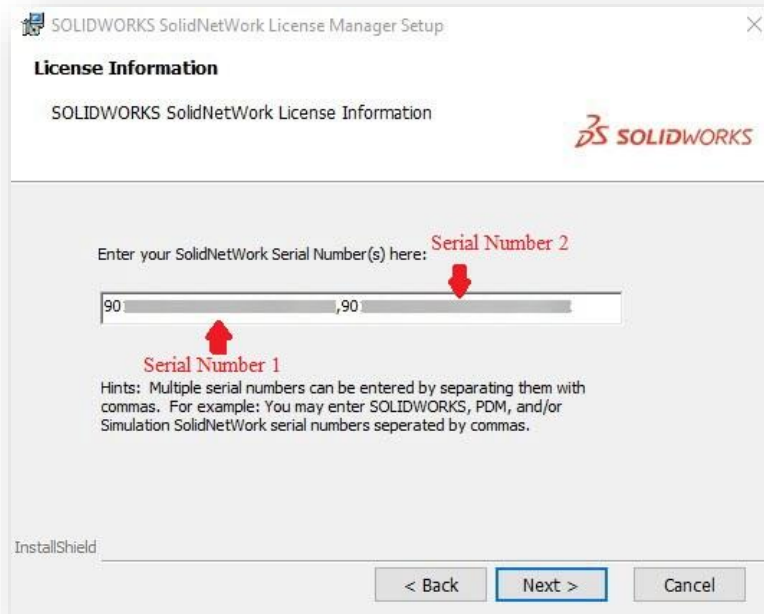
3. When the **SOLIDWORKS SolidNetWork License Manager Setup** dialog box appears, click **Next**.



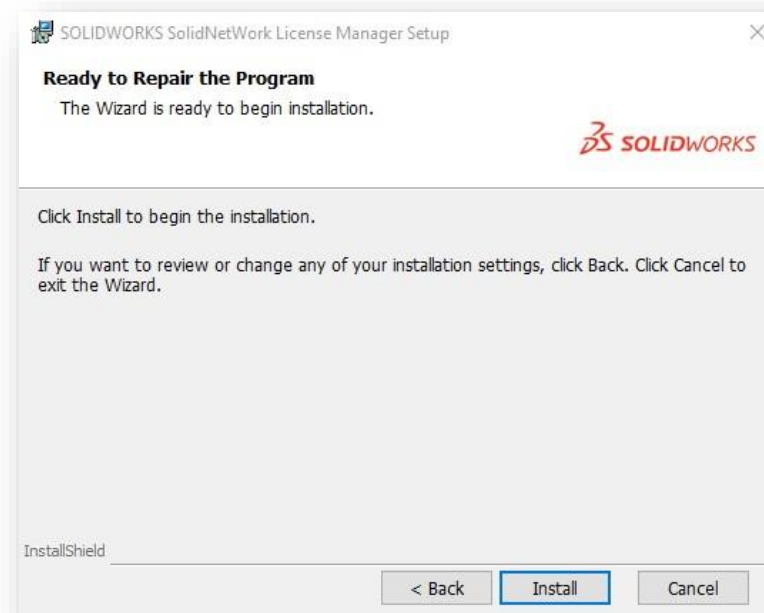
4. In the **Program Maintenance** dialog box, select the **Modify** option and then click **Next**.



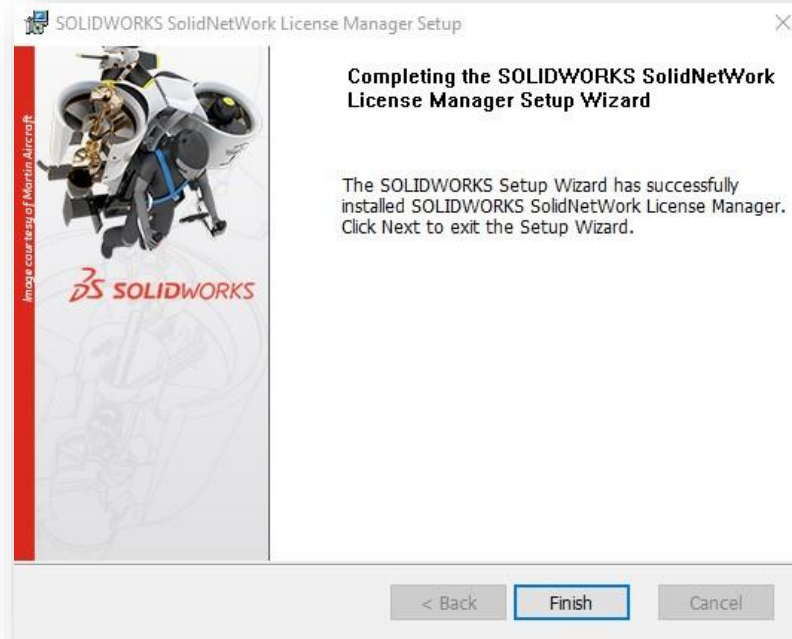
5. Next to the existing serial number, enter a comma, enter your DraftSight serial number, and then click **Next**.



6. In the **Ready to Repair the Program** dialog box, click **Install**.



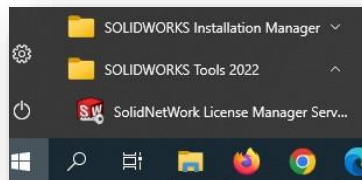
7. When the **Completing the License Manager Setup** page appears, click **Finish**.



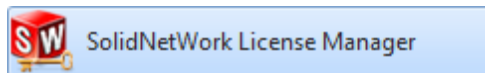
b) License Manager and Product Activation

To activate the DraftSight license, follow these steps:

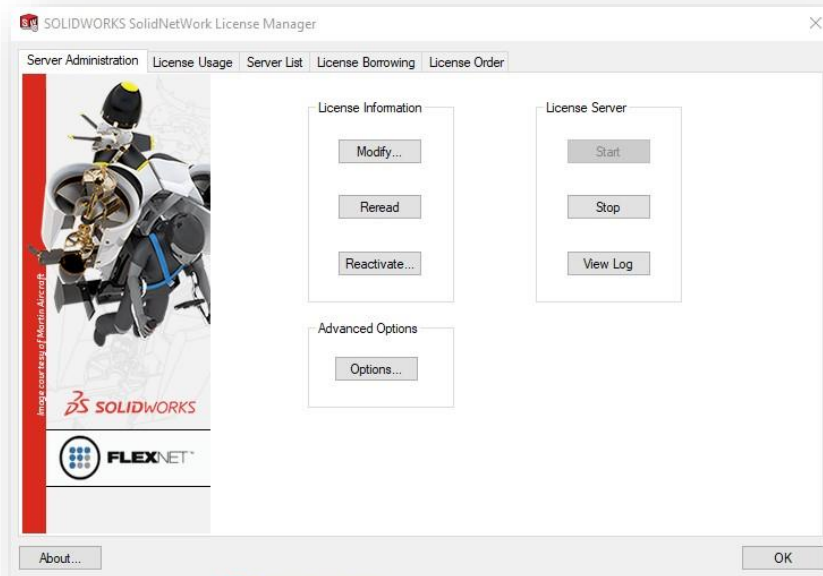
1. From the Windows Start menu, run the **SolidNetWork License Manager Server** application.



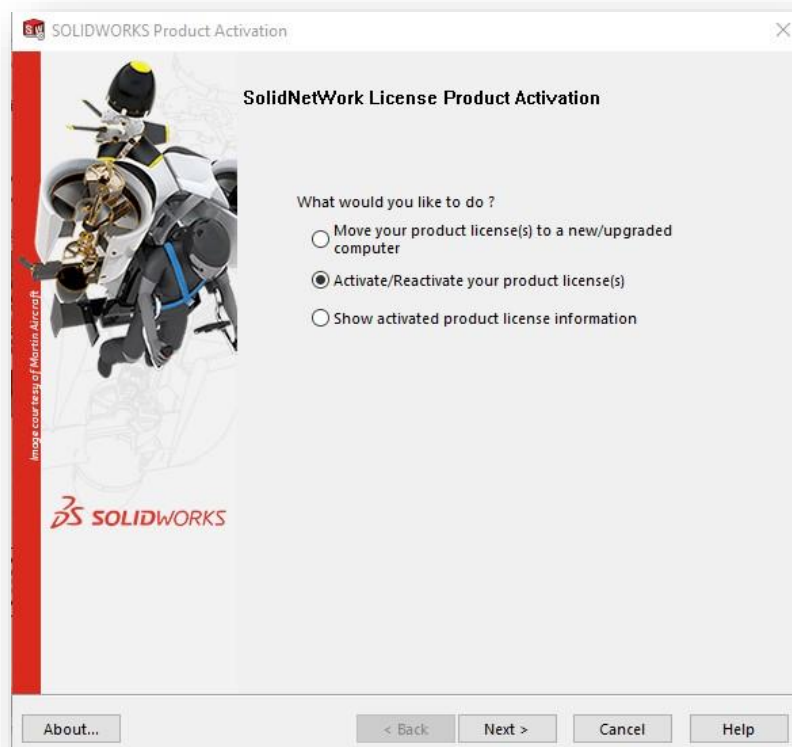
If available, you can also click the **SolidNetWork License Manager** icon as shown below.



2. In the **SOLIDWORKS SolidNetWork License Manager** dialog box, click **Modify**.

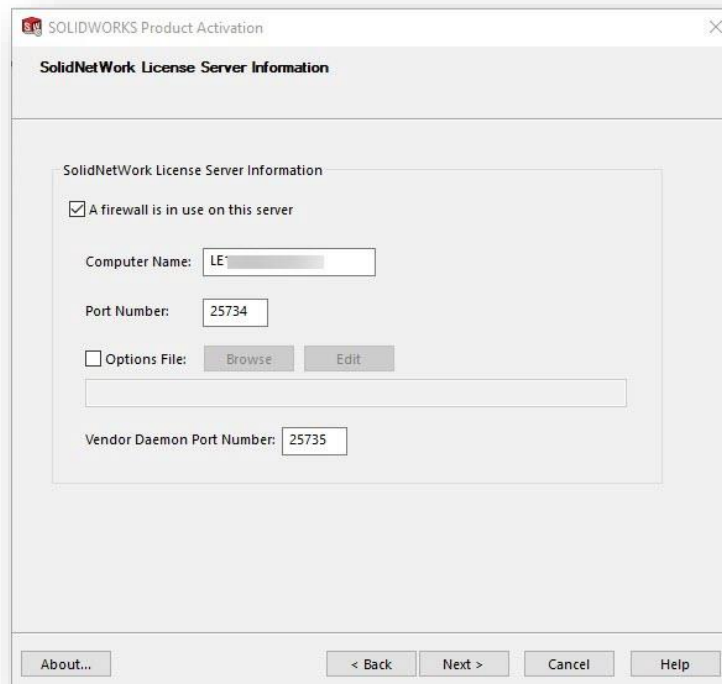


3. Select the **Activate/Reactivate a software license(s)** option, and then click **Next**.

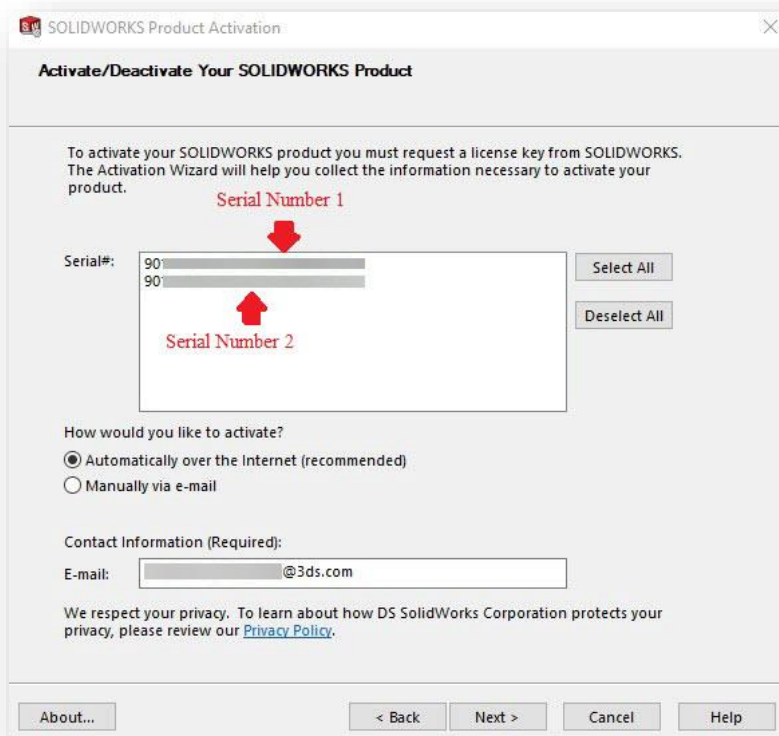


The **SOLIDWORKS Product Activation** dialog box appears. The computer name and port number are already populated.

4. Click **Next**.



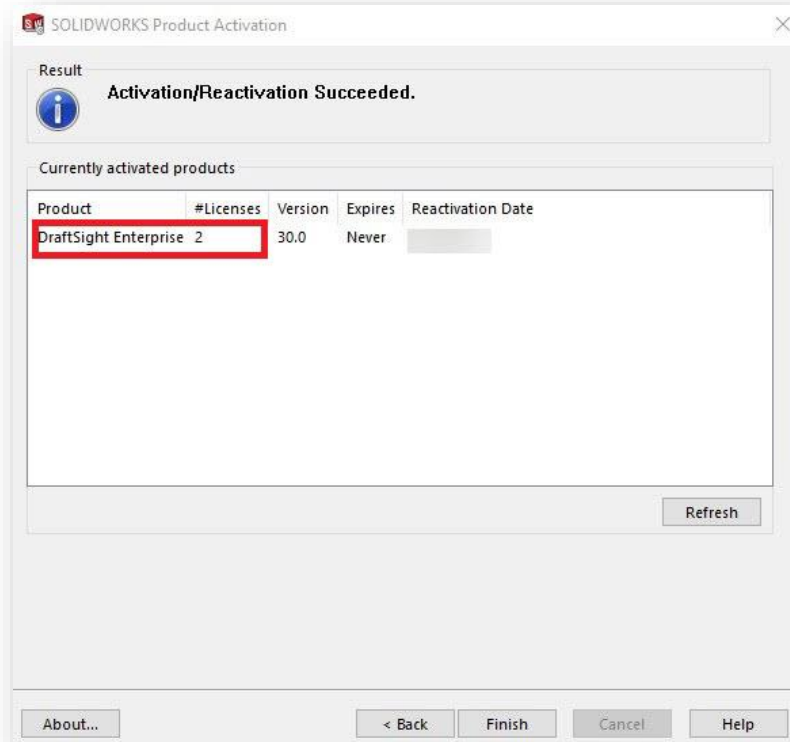
5. In the **Activate/Deactivate Your SOLIDWORKS Product** dialog box, select the **Automatically over the Internet (recommended)** option and enter a valid email address. Click **Next**.



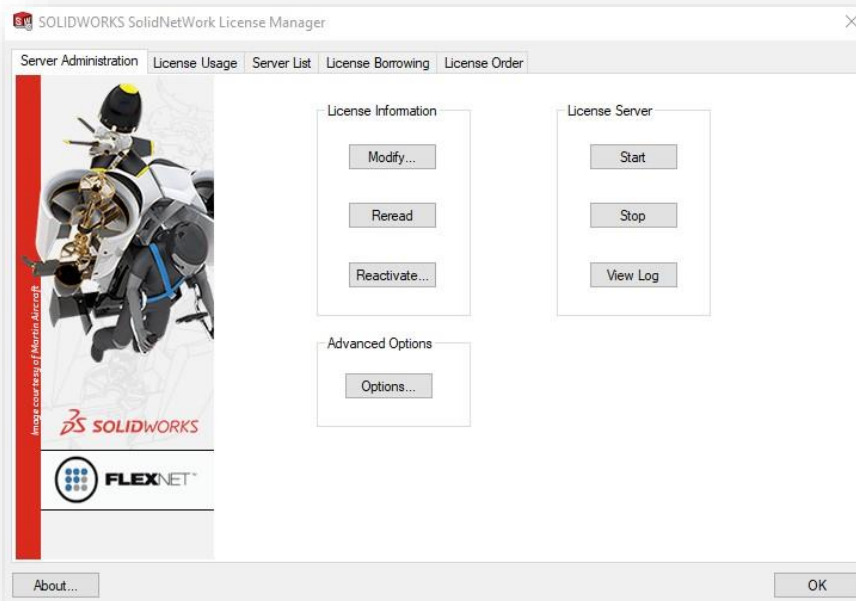
The activation is in progress.



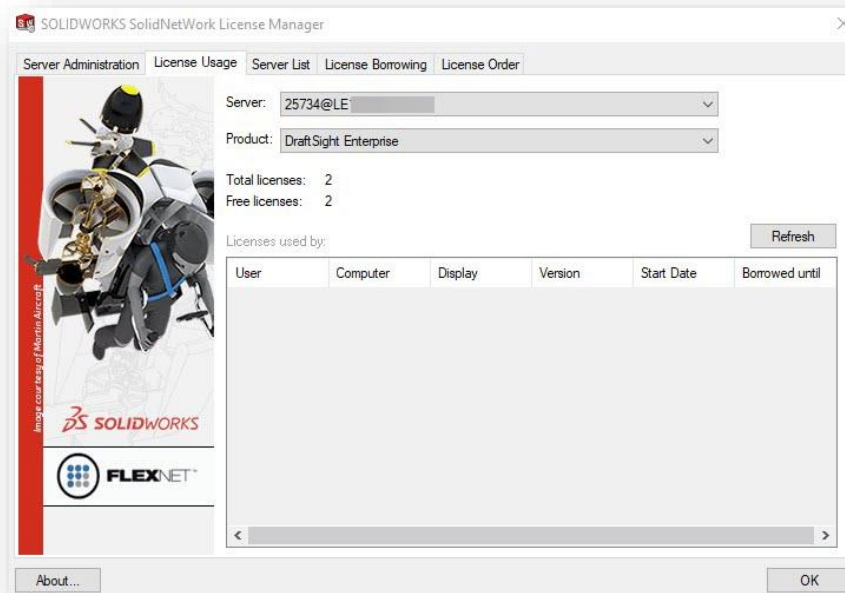
6. The **SOLIDWORKS Product Activation** dialog box reappears and shows the number of DraftSight Enterprise licenses that are now active.



7. Click **Finish**. The **SOLIDWORKS SolidNetWork License Manager** dialog box appears.

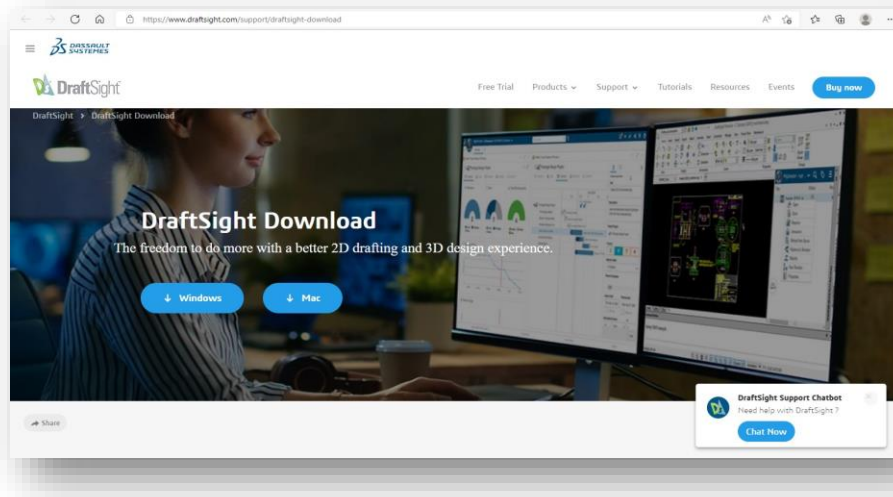


8. Click the **License Usage** tab.
9. The DraftSight Enterprise product appears in **Product** menu, along with the products previously activated. Click **OK** to close the dialog box.



5) Installing DraftSight on Client Computers Manually

1. Download the DraftSight client software from <https://www.draftsight.com/support/draftsight-download>.



2. Read the *DraftSight License and Subscription Services Agreement* and then click **Accept and download** at the bottom of the agreement.



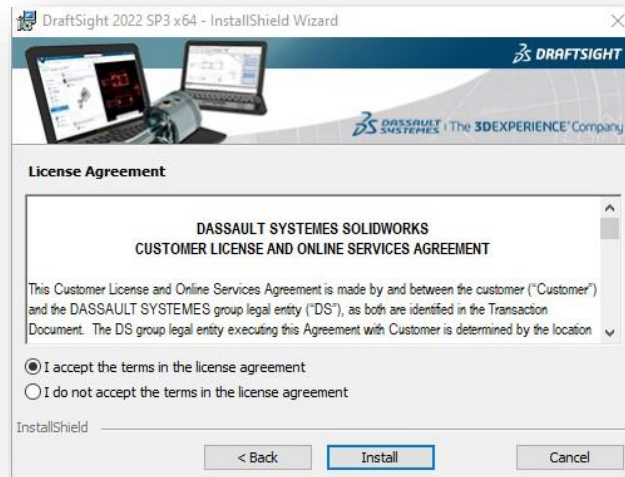
3. Save the file to the client computer and then double-click the file to start the installation.



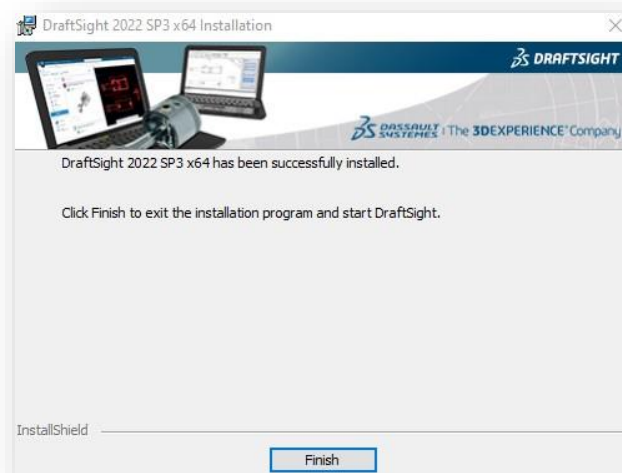
4. In the installation wizard, make sure to select the **SolidNetWork License (SNL)** option, and then click **Next**.
5. On the next page of the wizard, enter your SNL server information using the syntax **25734@servername**, and then click **Next**.



6. Accept the *Customer License and Online Services Agreement* and then click **Install**. The installation begins.



7. When you see the message that DraftSight installed successfully, click **Finish**.



6) Deploying a DraftSight Installation

If you want to distribute and install DraftSight on multiple machines, you can use the DraftSight Deployment Wizard to accomplish this. To access this tool, contact your SOLIDWORKS reseller or the DraftSight Technical Support team.

You can also deploy DraftSight from a Windows command prompt. For more information about this method, refer to the topic *"DraftSight command line installation"*, in the DraftSight User Forum at:

https://r1132100503382-eu1-3dswym.3dexperience.3ds.com/#community:51/wiki:b_nq-LiLSgW5EZJ3VAzBcg

7) Dassault Systèmes License Manager (DSLS) Process Overview

This section covers the installation process for the Dassault Systèmes License Manager (DSLS) license service on a supported Windows OS, and the DraftSight Enterprise or DraftSight Enterprise Plus on client computers. The guide offers two scenarios for DSLS installation and configuration:

- Scenario 1: Installing DSLS for the first time.
- Scenario 2: DSLS Single License Server configured with the default settings.

a) What you need

- A DraftSight Enterprise or DraftSight Enterprise Plus license file
- The DS License Manager (DSLS) installation files
- The DraftSight installation files

You can download the DSLS and DraftSight installation files from the following location on the internet:

<https://software.3ds.com/>

b) Preparing for the DSLS installation

To ensure a successful installation, before installing either the License Manager on your server or the DraftSight software on the workstations, it is important that you review the system requirements and understand the administrative permission requirements. .

Keep in mind that the license file you receive is computer-specific and is generated based on the TargetID of the computer that serves as the License Server (as provided in the Product Order). The license file does not work on a different computer, even if the computer is compliant with the system requirements.

a) Review the prerequisites for the application

Confirm that the computers on which you are going to install the DSLS and DraftSight software meet or exceed the minimum system requirements. Noncompliance with the system requirements or supported platforms might cause performance problems or errors when using DSLS or DraftSight.

The *License Manager* requirements are:

- SolidNetWork License (SNL) version 2022 SP0 or later
- Dassault Systèmes License Server (DSLS) version 6R2022x or later

Any change in the prerequisites does not require the replacement of licenses in use. You can continue to use valid licenses until their expiration date. In the same way, previous DraftSight installations do not require a mandatory update.

i) DSLS-supported operating systems

For information about the DSLS-supported operating systems, refer to the product documentation and the product download page at:

<https://www.DraftSight.com/media/system-requirements-DraftSight>

*Only users with a Support DS Passport can download the DSLS server software.

ii) DraftSight-supported operating systems and system requirements

With every DraftSight release, you can download the DraftSight system requirements from this site:

<https://www.DraftSight.com/media/system-requirements-DraftSight>

8) Installing the DS License Manager

This section describes a typical DSLS setup for the license server and license client computers. It includes things to consider before and when performing the installation.

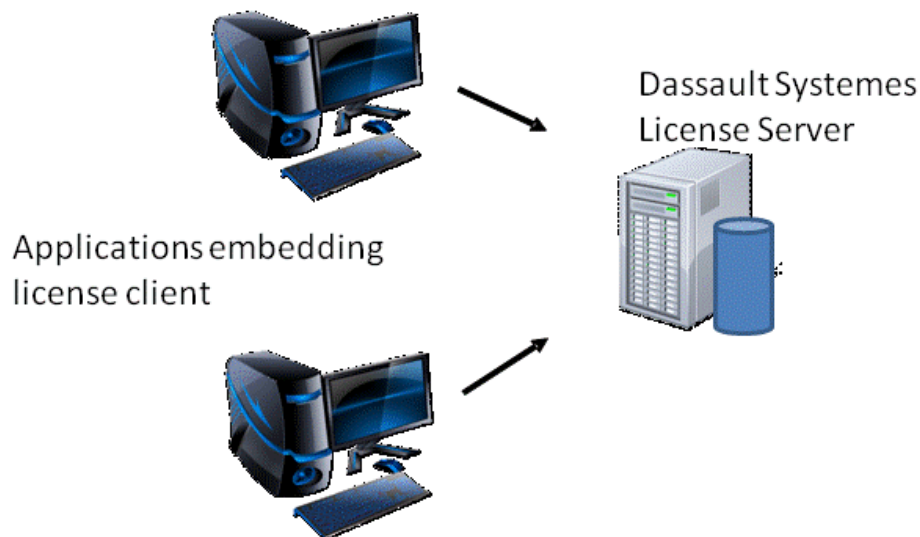
a) Preliminary information

Before performing the installation, make sure to consider the following information:

- DSLS does not provide support for virtual machines, such as VMWare. It is impossible to install or run the DS License Server software on a virtual machine. In addition, there is no support for extracting an offline license and using a nodelock license in a virtual machine.
- You can install and configure only one DS License Server instance a given computer, either as a standalone instance or as a failover member.
- License servers and license clients require synchronization. The system tolerates an absolute time difference of one-hour maximum.

a) Typical setup of the DSLS license server and client computers

A license server helps the administrator to ensure license control compliance with purchased license products and license clients. The following image depicts a typical setup scenario for the license server and client computers.



DSLS License Manager supports the assignment of multiple licenses by distributing licenses to client computers on the network. This allows the number of users to exceed the number of licenses by using *floating licenses*.

The DSLS License Manager software is installed only on the license manager computer. Enrolling the license file provided activates only the license manager computer.

The license client computers do not require the installation of any additional DSLS-specific software.

If you specify the Dassault Systèmes License Server (DSLS) option when installing DraftSight on the client computers, DSLS identifies the computer as a DSLS license client.

The DraftSight Installation Manager prompts you for the DSLS license manager computer name and port number to connect the client computer to the license manager.

The License Manager computer and all license clients must have TCP/IP connectivity.

b) Installing DSLS on the license server computer

This section explains how to install the DSLS License Server on a single computer running on a supported Windows OS.

To install the DS License Server software:

1. Log in as administrator. You must either belong to the **Administrators** group or have the same administrative privileges as members of the **Administrators** group. Otherwise, you might not be able to start the installation.
2. Download the application installer using the link in the email message that you receive at the time of purchase

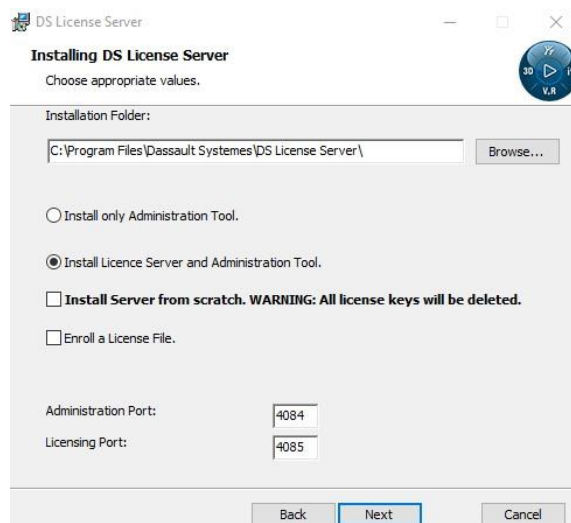
3. Retrieve the license file that you received in a second email message.
4. Browse to the location where you saved the *SetupDSLS.msi* file and double-click the file to start the installation. This opens the **DS License Server** setup wizard.
5. Click **Next** to start the installation.



6. When the **DS License Manager Setup** dialog box appears, click **Next**.
7. Specify the path to the installation folder

The folder you choose must be empty. You can also specify a new folder. If the folder does not exist, you receive a prompt to specify that you want to create the folder. In this case, you must click **Yes** to create the folder.

8. Click **Next** to move to the next step.
9. Select the installation type.



You have two choices:

- **Install only Administration Tool:** Choosing this option installs only the License Administration Tool.
- **Install License Server and Administration Tool:** This is the default option.

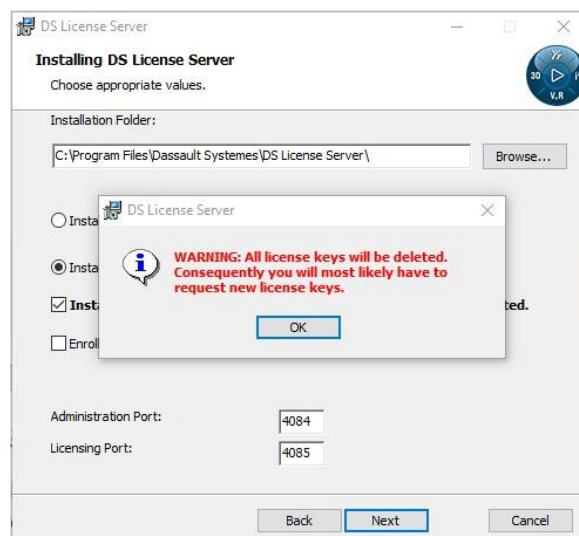
This guide uses an example that installs both the License Server and the License Administration Tool.

10. Specify the listening **Administration Port** number. The port number you specify listens for DS License Server Administration Tool requests. The default port number is 4084.

- **Decide whether to install the software from scratch.**

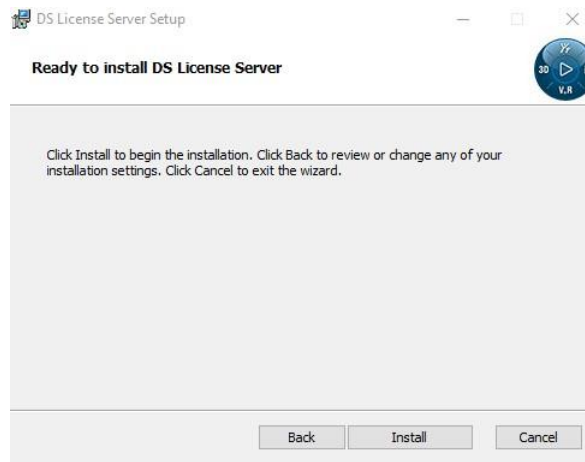
Installing from scratch means that you are installing the DS License Server and deleting all previous licenses in the license repository as well. This might be required if your licenses are corrupted.

11. To install the server from scratch, activate the **Install Server from scratch** option. The warning appears again to inform you of the deletion of all licenses if you continue:



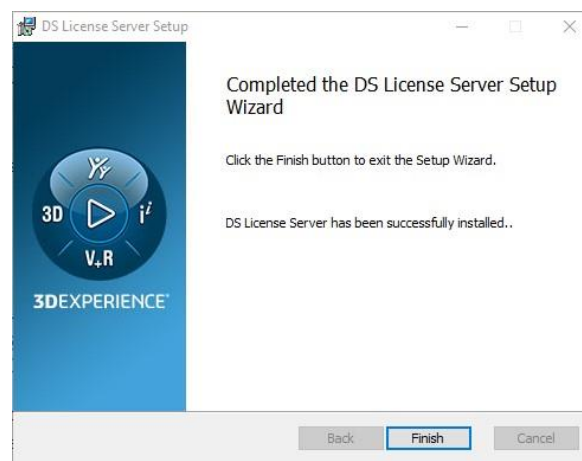
12. Click **OK**, and decide if you want to continue installing from scratch. If you want to keep your existing licenses, clear the Install Server from scratch check box and then click Next to move to the next step.

The **Ready to install DS License Server** dialog box appears.



13. Click **Install**. If you receive a **User Account Control (UAC)** prompt to confirm the installation, click **Yes**.

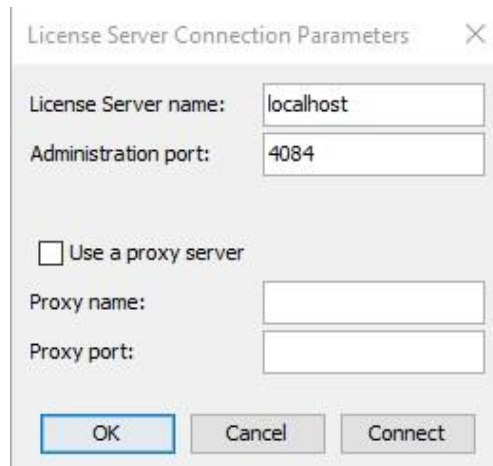
The **Installing DS License Server** dialog box appears, which displays a progress bar. When the installation completes, the following dialog box appears:



Next, the License Administration Tool runs automatically and the **License Server Connection Parameters** dialog box appears in the foreground.

14. In the DS License Server Setup Wizard, click **Finish** to exit wizard.

The License Administration Tool remains open. You must now use the **License Server Connection Parameters** dialog box to create a server definition for the license server that you installed.



License Server Connection Parameters

License Server name: localhost

Administration port: 4084

☐ Use a proxy server

Proxy name:

Proxy port:

OK Cancel Connect


15. Enter a name for the license server (typically the name of the computer that hosts the server). Be aware that the characters you enter appear in red until the software locates the computer name.


16. Next, specify the listening port number for the License Administration Tool and then click **OK**.




The **Server Definitions** tab now appears as follows:



ii) Connect to the license server

You must now connect to the server to use it. If you point to the  icon in the **Status** column, you see a message similar to **server xxx not connected**.

- **To connect to the license server:**
 - ▶ Select the **Servers > Connect** command and choose the server name from the list.
 - ▶ Or, right-click the  icon and select the **Connect** command.

The  icon appears over the  icon like this  :




You must now configure the server as a standalone server and activate it before you can use it.

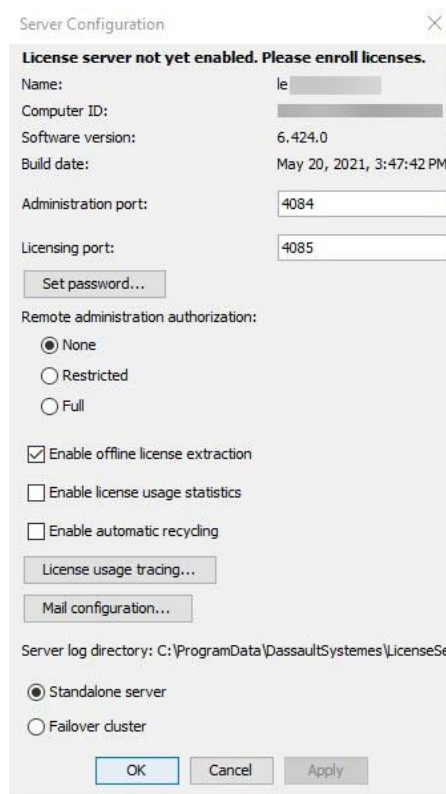
9) Configuration and Activation of the DS License Server

a) Configuring the license server

- **To configure the license server:**

- ▶ Select the **Servers > Properties** command and choose the server name from the list.
- ▶ Or, right-click the  icon and select the **Display properties** command.
- ▶ Or, double-click the line that contains the computer name.

The **Server Configuration** dialog box appears:



You do not have to specify any other options at this time, apart from **Administration port** and the **Licensing port**. For information purposes, the *DS License Server Installation and Configuration Guide* provides information about the options that appear in this dialog box.

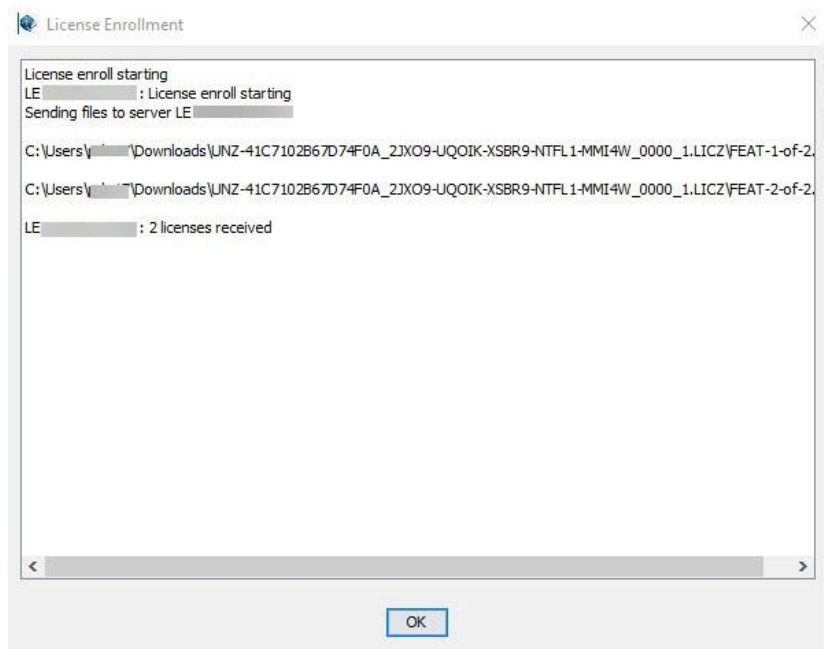
Click **OK**. Now, when you point to the 🚫 icon, you see the message **no license enrolled**.

For the moment, the license server is configured but not activated. You cannot use the license server until you activate it. To activate the license server, you must enroll the *LICZ* format file that contains the product licenses.

b) Activating the DS License Server

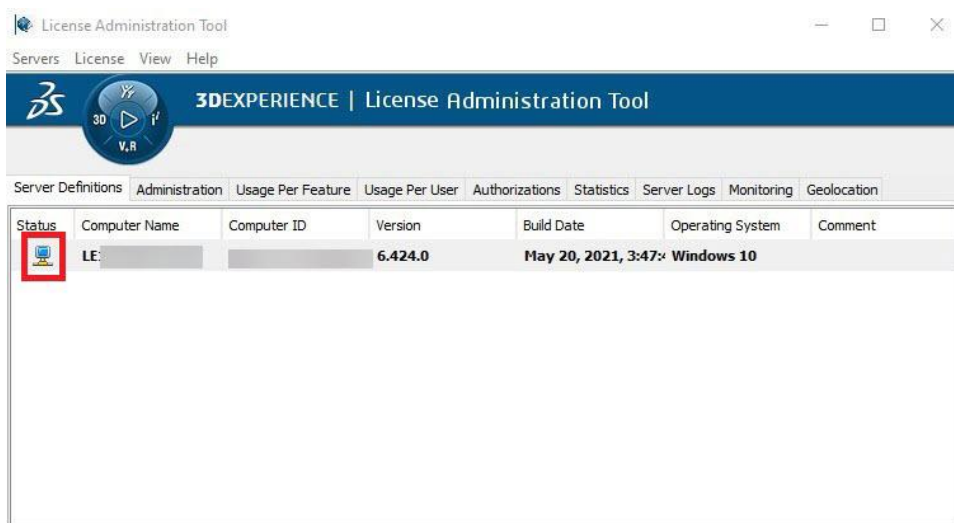
To activate the license server, you must enroll the *LICZ* format file that contains the product licenses. Follow these steps:


1. Select the **License > Enroll** command. The **Open** dialog box appears.
2. Select the appropriate *LICZ* format file that contains your licenses and then click **Open**.
3. The **License Enrollment** dialog box appears and displays messages confirming the enrollment of the licenses on your server:



4. Click **OK**.

The  icon indicates confirmation that your server was activated:



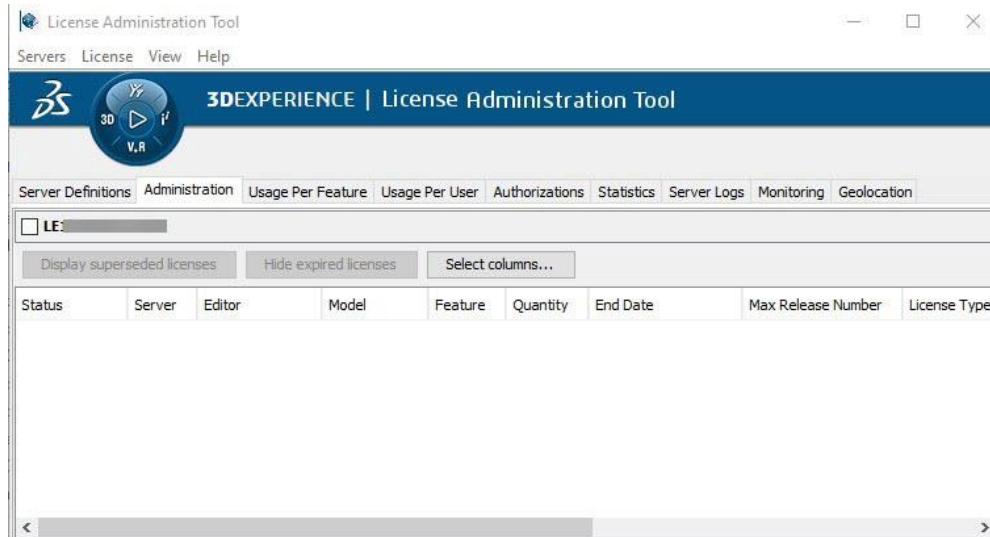
If you point to the  icon, you see the message **server servername connected**, which confirms that your license server is up and running.

Warning: the activation license included in *LICZ* files with the product licenses is valid for only 30 days. You must activate the license server within 30 days after receiving the license file. If you need to activate the server a second time, after the first 30 days, the activation license for the original *LICZ* file is no longer valid. Such cases require another activation license included in another *LICZ* file. You only have to activate the license server once. The 30 days restriction applies only to the life of the activation license, not to how long the license server remains active.

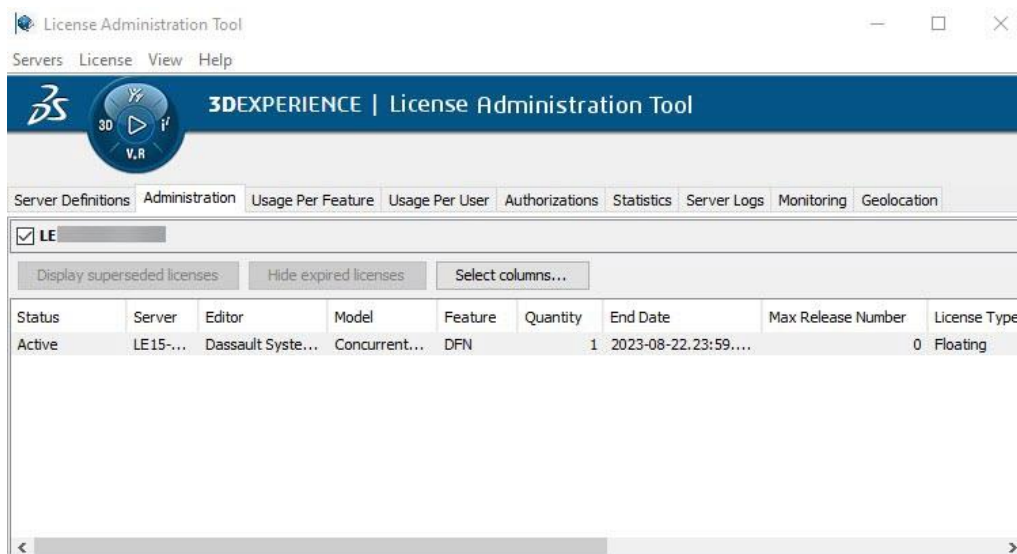
c) Managing licenses

After enrolling licenses, you can perform simple license administration tasks.

1. Click the **Administration** tab:



2. Activate the check box next to the server name to display the licenses enrollments for that server.



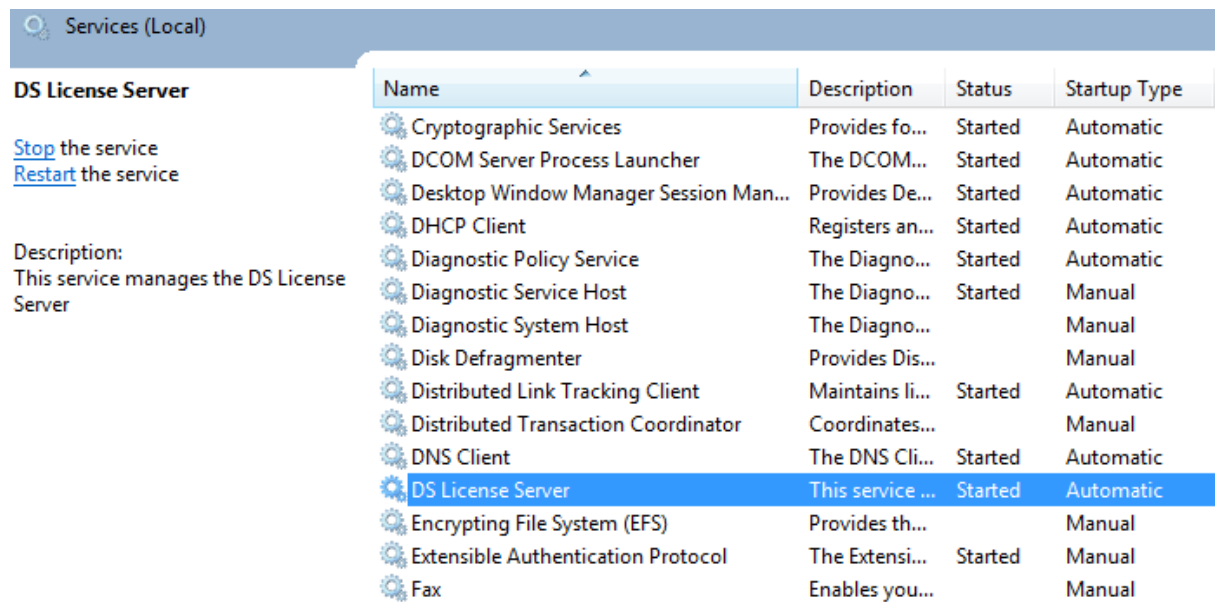
For information purposes, the *DS License Server Installation and Configuration Guide* provides information about the options that appear in this dialog box.

10) Starting and Stopping the DS License Server

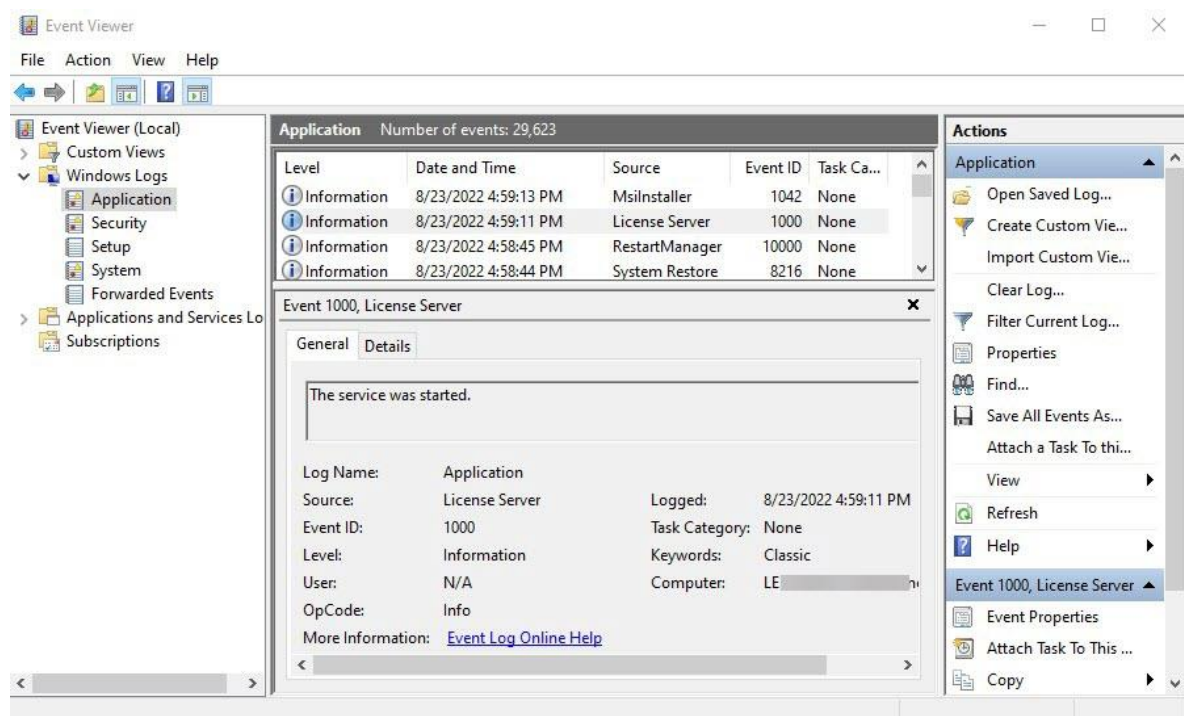
The easiest way to stop the license server is to use the Windows **Services** app.

Installing the DS License Server creates a Windows service with the name **DS License Server**. In the default installation, the service is configured to start automatically. The DS

License Server service ensures that the DS License Server always starts automatically when you log on.

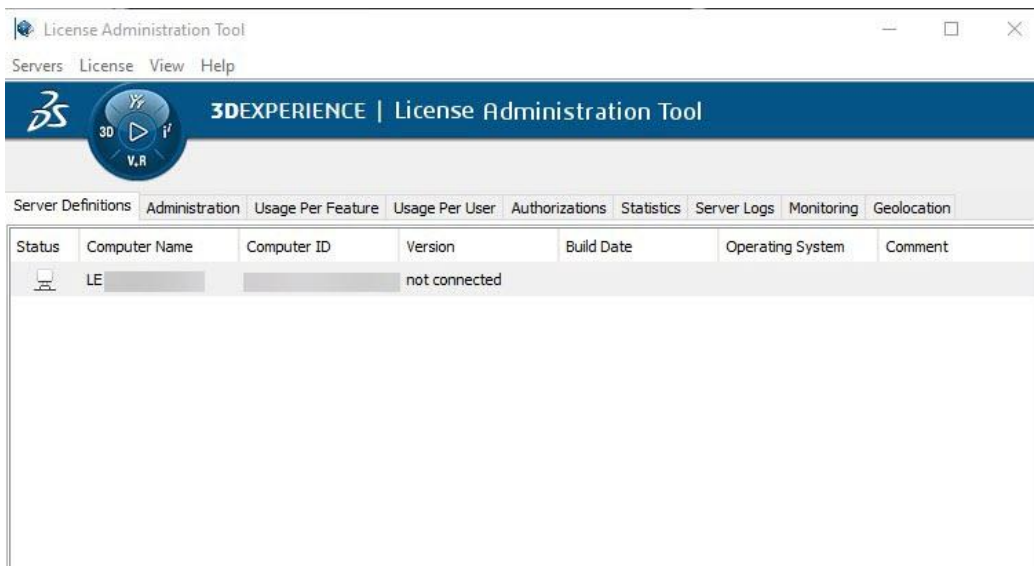
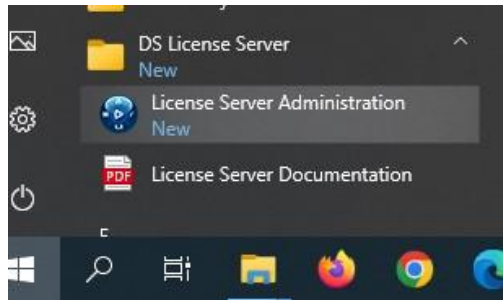



Information and errors that relate to the DS License Server service appear in the **Application** section of the Windows event log. To view the event logs, press the Windows key on the keyboard, type **eventvwr** in the search panel, and then press Enter. Click the **Application** node in the tree view and look for **License Server** events in the **Source** column. Refer to the next image.



Connection issues can be investigated using License Administration Tool by following these steps:

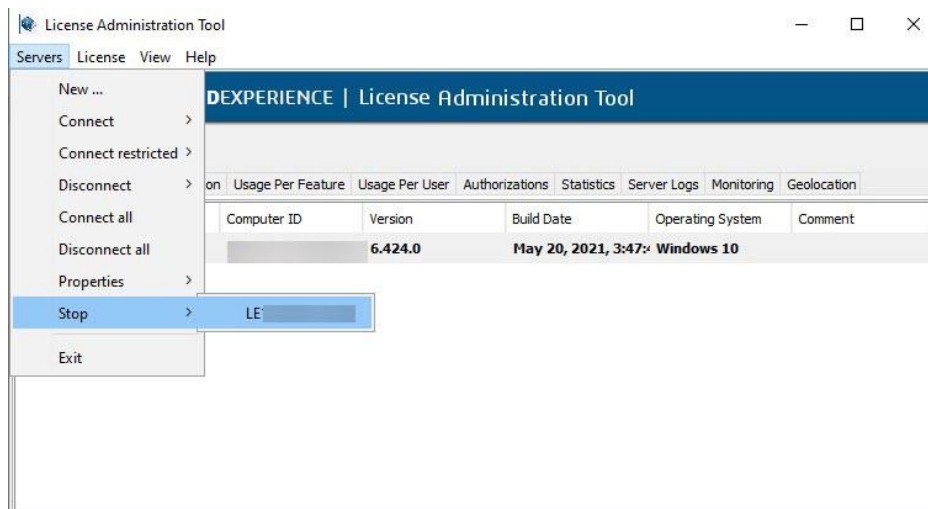
1. Press the Windows key on the keyboard and in the list of programs, click **DS License Server > License Server Administration**.



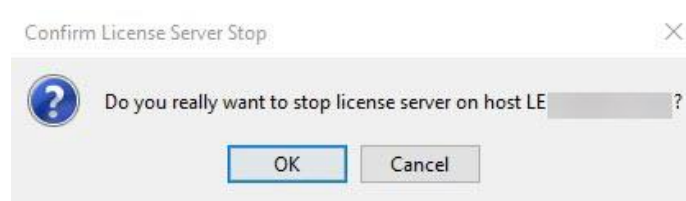
2. Right-click the  icon and then select the **Connect** command:



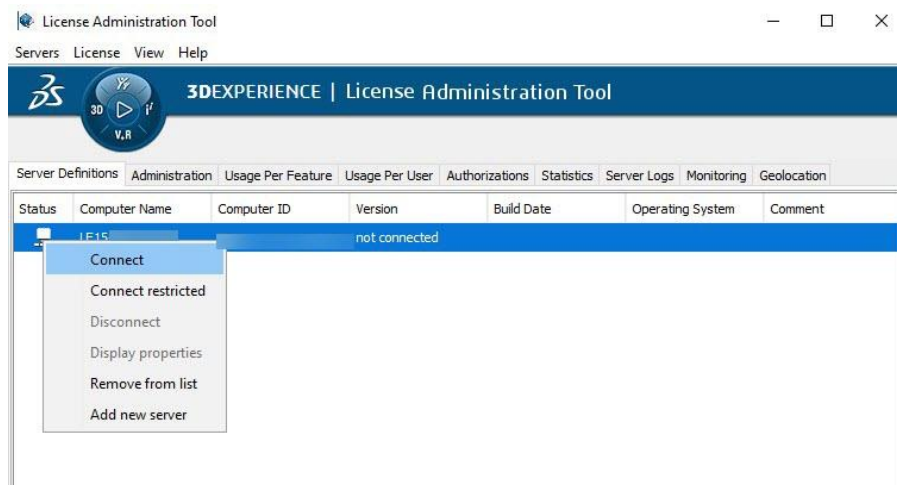
3. Select the **Servers > Stop** command and then select the server name.



A dialog box appears prompting you to confirm that you want to stop the server:



4. Click **OK**. This immediately disconnects you from the server: If you try to reconnect to the server, the following dialog box appears:



The message prompts you to verify the server host name and port number, and to confirm that the server is running. In this case, the server is not running because it was stopped.

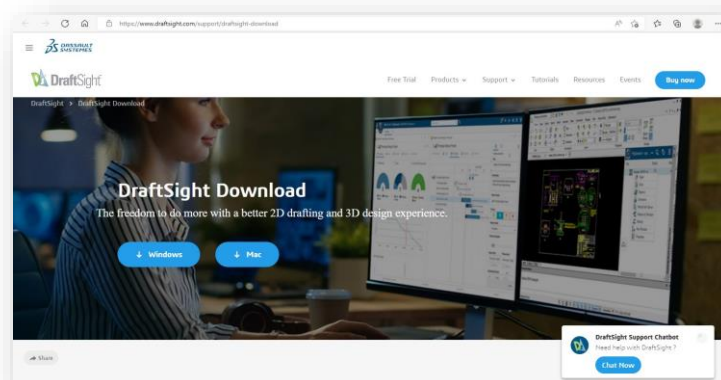
5. Click **OK** to display the license server configuration parameters, from which you can verify or correct the server host name and port number. Afterward, click **Cancel** to exit.

If you access the Windows **Services** management tool and refresh the list, you can see that the **DS License Server** service is stopped.

6. To start the license service again, open the Windows **Services** app, select the **DS License Server** service, and then click **Start the service**.
7. Open the License Administration Tool and follow same process to connect to the host server.

11) Installing DraftSight on the Workstations (manual)

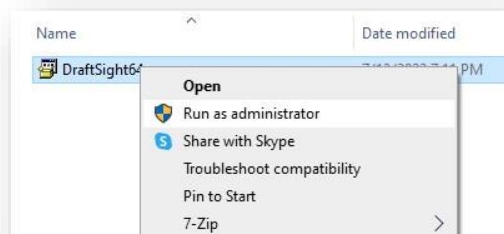
1. Download the DraftSight software from:
<https://www.draftsight.com/support/draftsight-download>



2. Read the *Customer License and Online Services Agreement* then click Accept and download at the bottom of the agreement.



3. Save the file to the client computer and then double-click the file to start the installation or right-click the file and select the **Run as administrator** option.

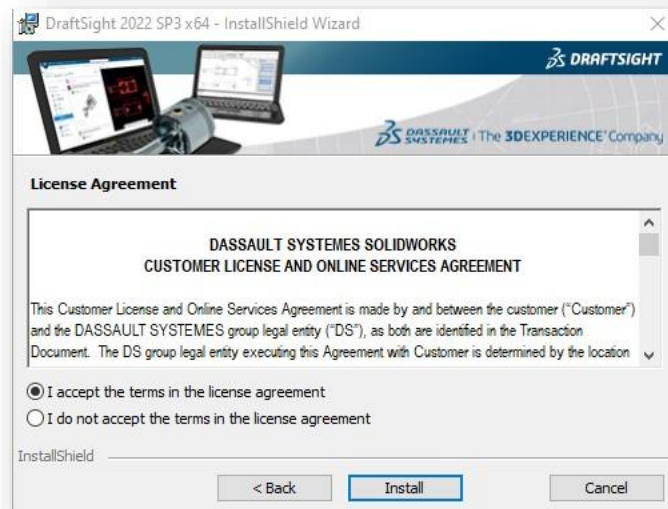


1. In the installation wizard, make sure to select the **Dassault Systemes License Server (DSLS)** option, and then click **Next**.

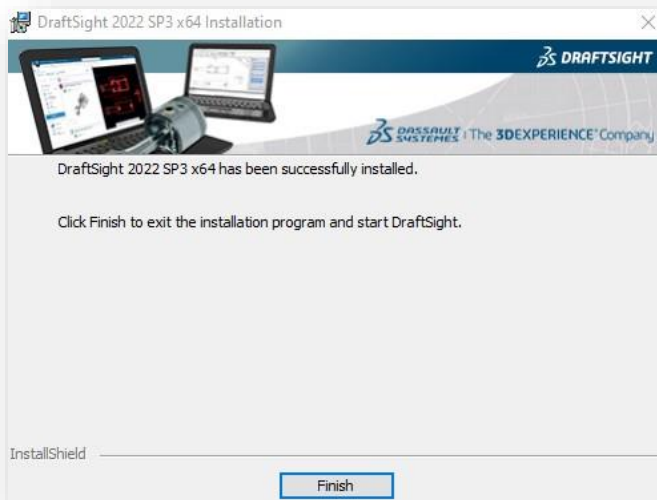


2. On the next page of the wizard, enter your DSLS server information and then click **Next**.

3. Accept the *Customer License and Online Services Agreement* and then click **Install**. The installation begins.



4. When you see the message that DraftSight installed successfully, click **Finish**.



a) DraftSight Installation Deployment

If you want to distribute and install DraftSight on multiple machines, you can use the DraftSight Deployment Wizard to accomplish this. To access this tool, contact your SOLIDWORKS reseller or the DraftSight Technical Support team.

You can also deploy DraftSight from a Windows command prompt. For more information about this method, refer to the following topic “DraftSight command line installation”, in the DraftSight User Forum:

https://r1132100503382-eu1-3dswym.3dexperience.3ds.com/#community:51/wiki:b_nq-LiLSgW5EZJ3VAzBcg

©2022 Dassault Systèmes. All rights reserved. 3DEXPERIENCE®, the Compass icon and the 3DS logo, CATIA, SOLIDWORKS, ENOVIA, DELMIA, SIMULIA, GEOVIA, EXALEAD, 3DVIA, 3DSWYM, BIOVIA, NETVIBES, and 3DEXCITE are commercial trademarks or registered trademarks of Dassault Systèmes or its subsidiaries in the U.S. and/or other countries. All other trademarks are owned by their respective owners. Use of any Dassault Systèmes or its subsidiaries trademarks is subject to their express written approval.

Delivering Best-in-Class Products



Dassault Systèmes, the **3DEXPERIENCE** Company, provides business and people with virtual universes to imagine sustainable innovations. Its world-leading solutions transform the way products are designed, produced, and supported. Dassault Systèmes' collaborative solutions foster social innovation, expanding possibilities for the virtual world to improve the real world. The group brings value to over 150,000 customers of all sizes, in all industries, in more than 80 countries. For more information, visit www.3ds.com.

CATIA, SOLIDWORKS, SIMULIA, DELMIA, ENOVIA, GEOVIA, EXALEAD, NETVIBES, 3DSWYM, 3DVIA are registered trademarks of Dassault Systèmes or its subsidiaries in the US and/or other countries.

Europe/Middle East/Africa

Dassault Systèmes
10, rue Marcel Dassault
CS 40501
78946 Vélizy-Villacoublay Cedex
France

Asia-Pacific

Dassault Systèmes
Pier City Shibaura Bldg 10F
3-18-1 Kaigan, Minato-Ku
Tokyo 108-002
Japan

Americas

Dassault Systèmes
175 Wyman Street
Waltham, Massachusetts
02451-1223
USA

Visit us at
3DS.COM

